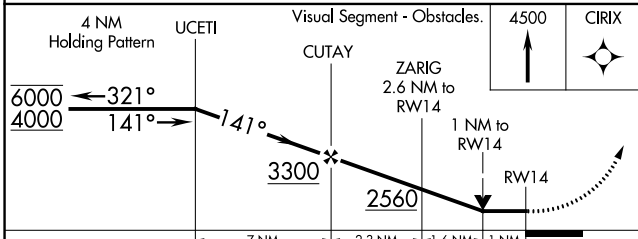
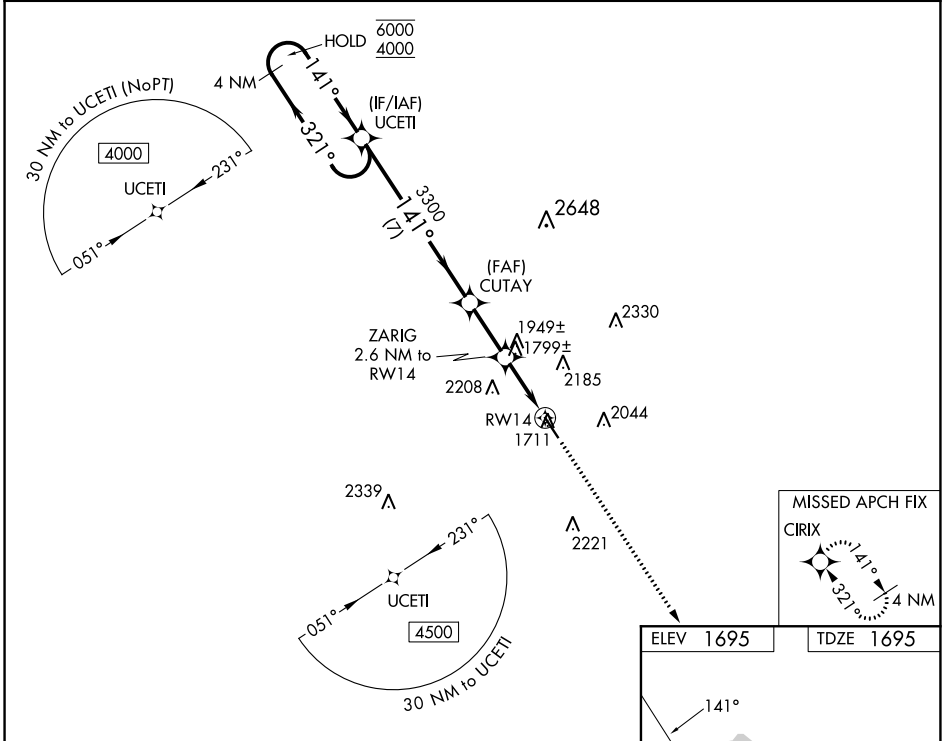


WAAS CH 78030 W14A	APP CRS 141°	Rwy Idg TDZE Apt Elev	5001 1695 1695
--	------------------------	-----------------------------	---

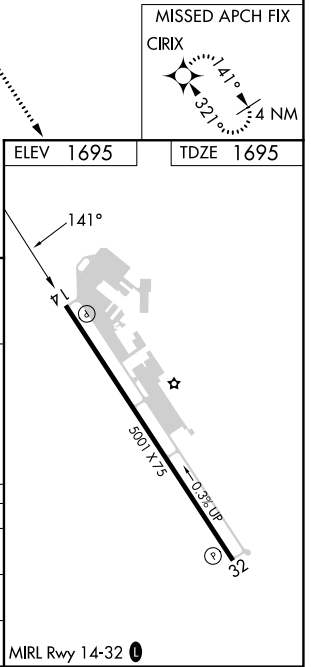
RNAV (GPS) RWY 14

GILLESPIE COUNTY (T82)

RNP APCH.		MISSED APPROACH: Climb to 4500 direct CIRIX and hold.	
AWOS-3 120.0	HOUSTON CENTER 134.2 307.3	GCO 121.725	UNICOM 122.7 (CTAF) 0



CATEGORY	A	B	C	D
LP MDA	2060-1 365 (400-1)			NA
LNAV MDA	2200-1	505 (600-1)	2200-1 ³ / ₈ 505 (600-1 ³ / ₈)	NA
CIRCLING	2200-1 505 (600-1)	2480-1 785 (800-1)	2520-2 ¹ / ₂ 825 (900-2 ¹ / ₂)	NA



SC-3, 31 OCT 2024 to 28 NOV 2024

SC-3, 31 OCT 2024 to 28 NOV 2024