

| | | |
|-------------|----------|-------------|
| APP CRS | Rwy Idg | 7200 |
| 090° | TDZE | 177 |
| | Apt Elev | 177 |

RNAV (GPS) RWY 9

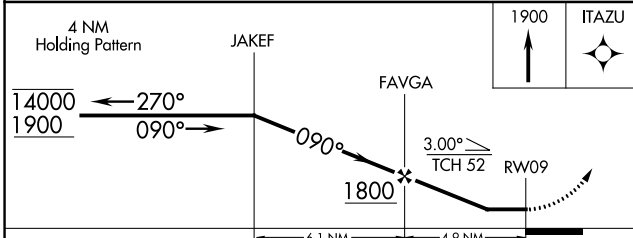
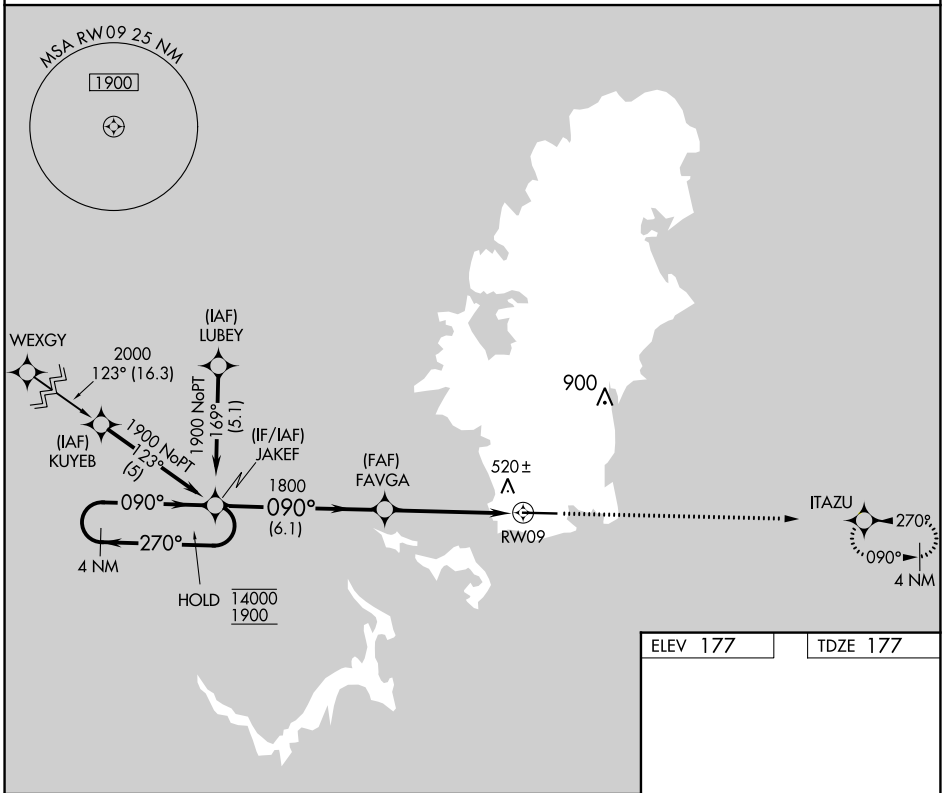
PALAU INTL (ROR)(PTRO)

RNP APCH-GPS.

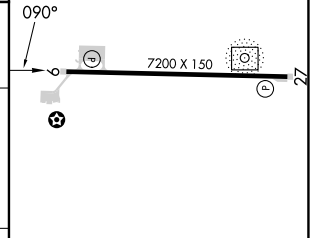
▼ Circling NA north of Rwy 9-27.
▲ Rwy 9 helicopter visibility reduction below 3/4 SM NA.
 Obtain local altimeter setting on CTAF; when not received, procedure NA. No controlled airspace below 5500.

MISSED APPROACH: Climb to 1900 direct ITAZU and hold.

KOROR RADIO
123.6 (CTAF) **0**



| | |
|----------|----------|
| ELEV 177 | TDZE 177 |
|----------|----------|



| CATEGORY | A | B | C | D |
|-------------------|----------------------|----------------------|------------------------------|----------------------|
| LNAV MDA | 660-1 | 483 (500-1) | 660-1 3/8 | 483 (500-1 3/8) |
| C CIRCLING | 700-1 523 (600-1) | 760-1 583 (600-1) | 780-1 3/4 603 (700-1 3/4) | 780-2 603 (700-2) |

MIRL Rwy 9-27 **0**
 REIL Rwys 9 and 27

PAC, 31 OCT 2024 to 26 DEC 2024

PAC, 31 OCT 2024 to 26 DEC 2024