

KARRR SEVEN DEPARTURE (RNAV)  
(KARRR7 .KARRR) 29DEC22

ASOS  
118.525  
CTAF  
122.725  
CLNC DEL  
124.0  
HOUSTON DEP CON  
134.45 284.0

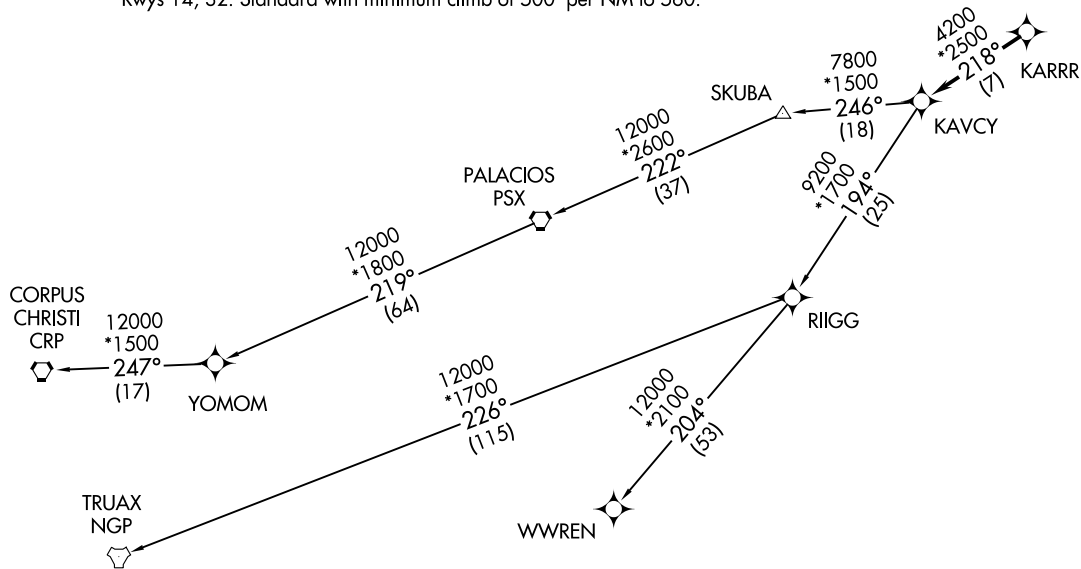
RNAV-1 DME/DME/IRU or GPS.

RADAR required.

TOP ALTITUDE:  
ASSIGNED BY ATC

TAKEOFF MINIMUMS

Rwys 14, 32: Standard with minimum climb of 500' per NM to 560.



(KARRR7 .KARRR) 22363  
KARRR SEVEN DEPARTURE (RNAV)

AL-6460 (FAA)

PEARLAND RGNL (L V T)  
HOUSTON, TEXAS

(NARRATIVE ON FOLLOWING PAGE)

NOTE: Chart not to scale.

HOUSTON, TEXAS  
PEARLAND RGNL (L V T)

# KARRR SEVEN DEPARTURE (RNAV)



## DEPARTURE ROUTE DESCRIPTION

TAKEOFF RUNWAY 14: Climb on heading 142° to 1 600, for RADAR vectors to KARRR, thence. . . .

TAKEOFF RUNWAY 32: Climb on heading 322° to 900, for RADAR vectors to KARRR, thence. . . .

. . . .on track 218° to KAVCY, then on (transition). Maintain ATC assigned altitude. Expect filed altitude 10 minutes after departure.

CORPUS CHRISTI TRANSITION (KARRR7.CRP)

PALACIOS TRANSITION (KARRR7.PSX)

TRUJAX TRANSITION (KARRR7.NGP)

WWREN TRANSITION (KARRR7.WWREN)

YOMOM TRANSITION (KARRR7.YOMOM)

SC-5, 31 OCT 2024 to 28 NOV 2024

SC-5, 31 OCT 2024 to 28 NOV 2024