

WAAS CH <b>93621</b> <b>W32A</b>	APP CRS <b>322°</b>	Rwy Idg <b>4313</b> TDZE <b>43</b> Apt Elev <b>44</b>
--	------------------------	---

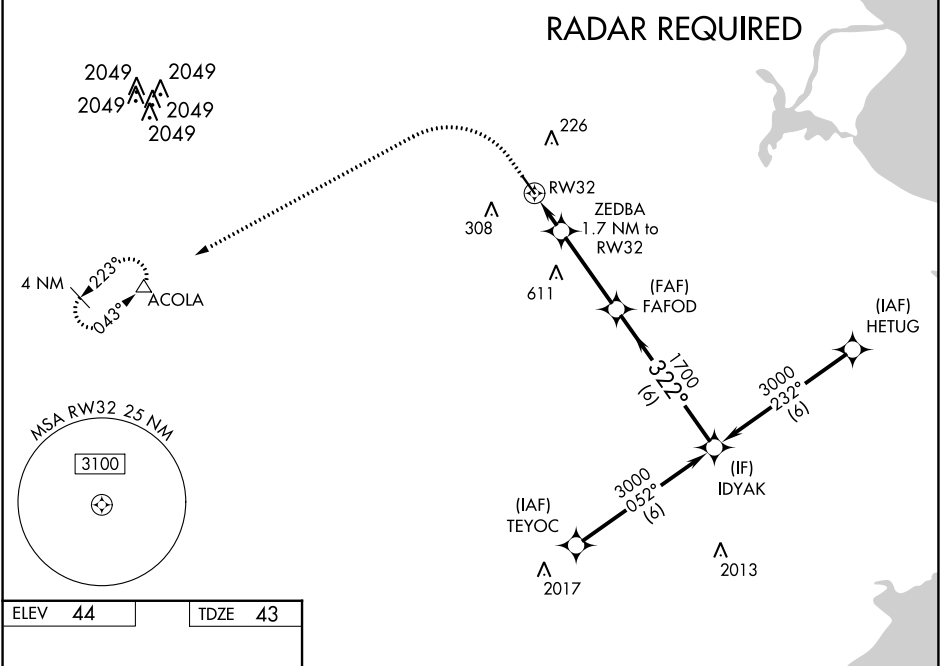
# RNAV (GPS) RWY 32

PEARLAND RGNL (L V J)

**⚠** Circling to Rwy 14 NA at night. For uncompensated Baro-VNAV systems, LNAV/VNAV NA below -1°C (31°F) or above 54°C (130°F). When local altimeter setting not received, use William P Hobby altimeter setting and increase all DA 18 feet and all MDA 20 feet, increase LNAV/VNAV visibilities all Cats 1/8 mile. VDP and Baro-VNAV NA when using William P Hobby altimeter setting. DME/DME RNP-0.3 NA. Helicopter visibility reduction below 3/4 SM NA.

**MISSED APPROACH:** Climb to 500 then climbing left turn to 3000 direct ACOLA and hold.

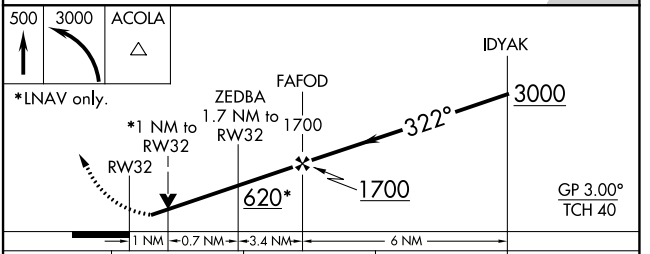
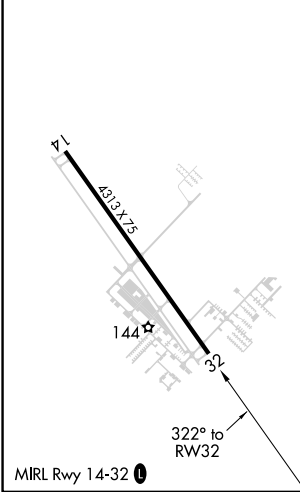
ASOS <b>118.525</b>	HOUSTON APP CON <b>134.45 284.0</b>	CLNC DEL <b>124.0</b>	UNICOM <b>122.725 (CTAF) 0</b>
------------------------	--	--------------------------	-----------------------------------



SC-5, 31 OCT 2024 to 28 NOV 2024

SC-5, 31 OCT 2024 to 28 NOV 2024

ELEV <b>44</b>	TDZE <b>43</b>
----------------	----------------



CATEGORY	A	B	C	D
LPV DA	293-7/8	250 (300-7/8)		NA
LNAV/VNAV DA	310-7/8	267 (300-7/8)		NA
LNAV MDA	400-1	357 (400-1)		NA
<b>C</b> CIRCLING	500-1 456 (500-1)	660-1 616 (700-1)		NA