

# WYLSN EIGHT DEPARTURE (RNAV)

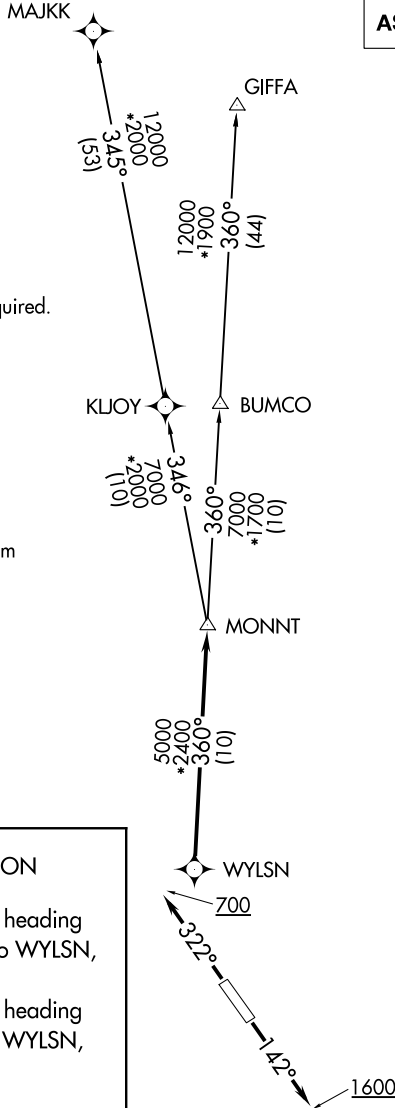
ASOS  
 118.525  
 CLNC DEL  
 124.0  
 CTAF  
 122.725  
 HOUSTON DEP CON  
 134.45 284.0

NOTE: RADAR required.  
 NOTE: DME/DME/IRU or GPS required.  
 NOTE: RNAV 1.

### TAKEOFF MINIMUMS

Rwy 14, 32: Standard with minimum climb of 500' per NM to 560.

**TOP ALTITUDE:  
 ASSIGNED BY ATC**



SC-5, 31 OCT 2024 to 28 NOV 2024

SC-5, 31 OCT 2024 to 28 NOV 2024

**DEPARTURE ROUTE DESCRIPTION**

TAKEOFF RUNWAY 14: Climb on heading 142° to 1600 for RADAR vectors to WYLSN, then. . . .

TAKEOFF RUNWAY 32: Climb on heading 322° to 700 for RADAR vectors to WYLSN, then. . . .

. . . .on track 360° to MONNT, then on (transition). Maintain ATC assigned altitude. Expect filed altitude 10 minutes after departure.

GIFFA TRANSITION (WYLSN8.GIFFA)  
MAJJK TRANSITION (WYLSN8.MAJJK)

NOTE: Chart not to scale.

# WYLSN EIGHT DEPARTURE (RNAV)