

WAAS CH 72702 W32A	APP CRS 324°	Rwy Idg TDZE Apt Elev	7000 4304 4308
--	------------------------	-----------------------------	---

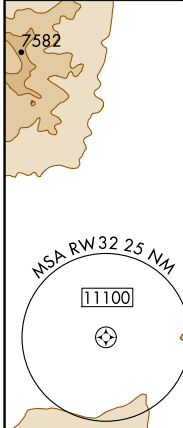
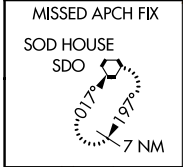
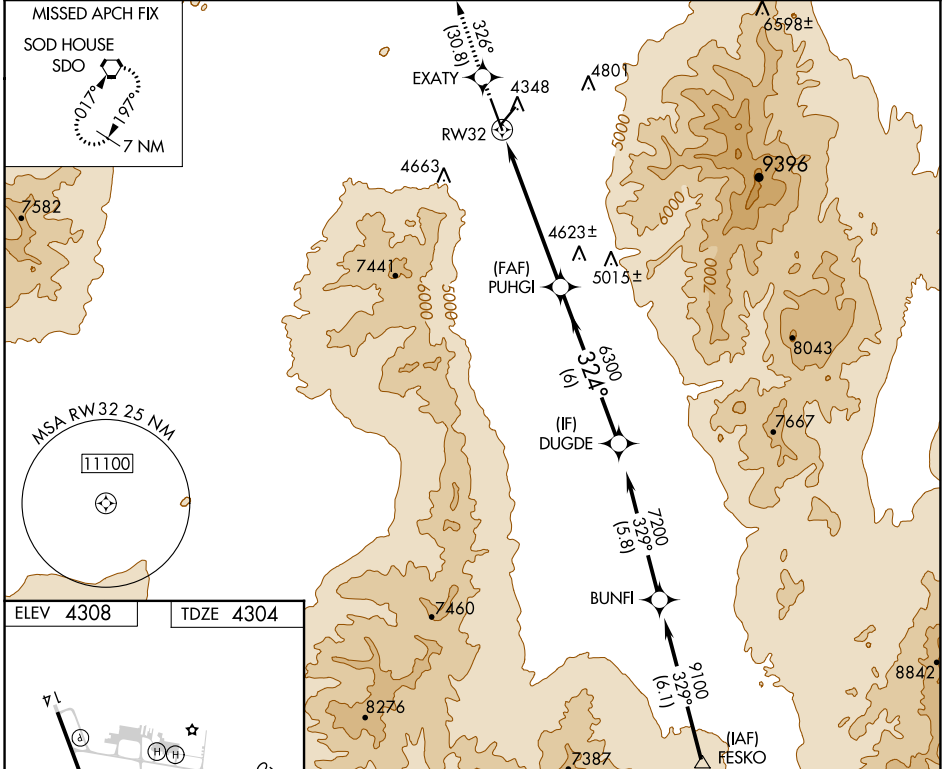
RNAV (GPS) RWY 32

WINNEMUCCA MUNI (WMC)

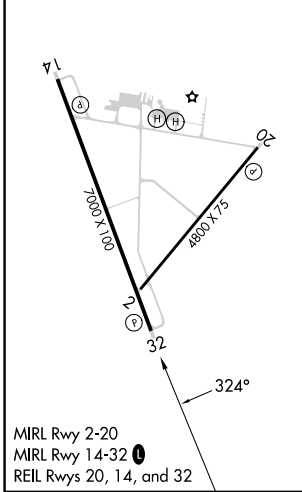
RNP APCH.
 Rwy 32 helicopter visibility reduction below 3/4 SM NA.
 VDP NA when using Battle Mountain altimeter setting.
 When local altimeter setting not received, use Battle Mountain altimeter setting and increase all DAs/MDAs 140 feet.

MISSED APPROACH: Climb to 10000 direct EXATY and on track 326° to SDO VORTAC and hold.

ASOS 120.175	SALT LAKE CITY CENTER 132.25 338.35	UNICOM 122.8 (CTAF)
------------------------	---	-------------------------------



ELEV 4308	TDZE 4304
-----------	-----------



10000	EXATY	tr 326°	SDO	VGSI And RNAV glidepath not coincident (VGSI Angle 3.00/TCH 40).
*LNAV only			PUHGI	DUGDE
*1.7 NM to RW32		324°		7200
1.7 NM		6300		GP 3.00° TCH 45
1.7 NM		4.3 NM		6 NM
CATEGORY	A	B	C	D
LPV DA	4554-3/4		250 (300-3/4)	
LNAV MDA	4880-1	576 (600-1)	4880-1 1/2	4880-1 3/4
			576 (600-1 1/2)	576 (600-1 3/4)

SW-4, 31 OCT 2024 to 28 NOV 2024

SW-4, 31 OCT 2024 to 28 NOV 2024