

WAAS CH <b>65922</b> <b>W23A</b>	APP CRS <b>228°</b>	Rwy Idg TDZE Apt Elev	<b>5500</b> <b>19</b> <b>19</b>
--	------------------------	-----------------------------	---------------------------------------

# RNAV (GPS) RWY 23

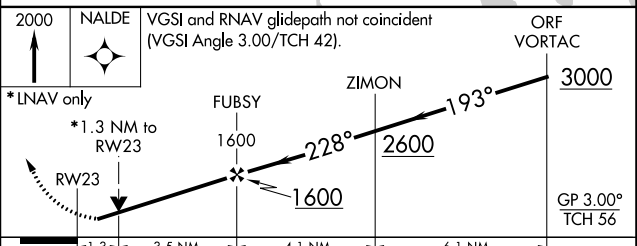
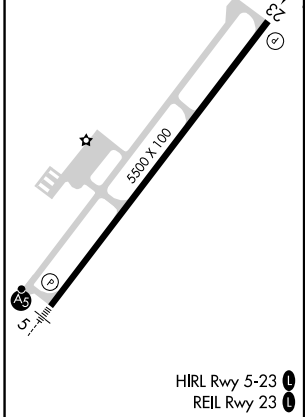
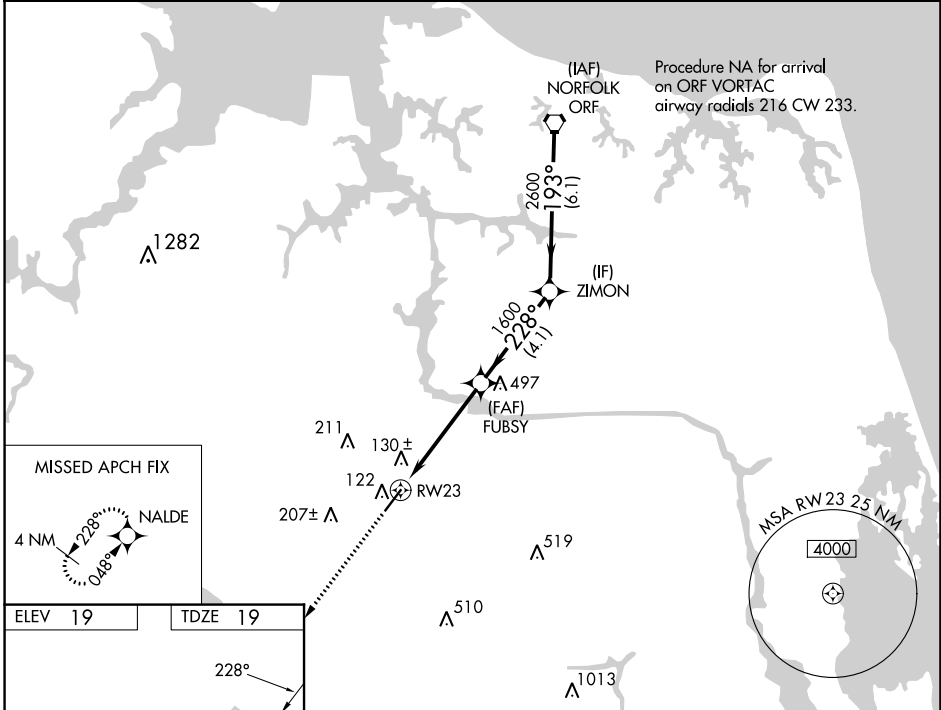
CHESAPEAKE RGNL (CPK)

RNP APCH.

**⚠** Rwy 23 helicopter visibility reduction below 1 SM NA. When local altimeter setting not received, use Norfolk Intl altimeter setting and increase all DA 36 feet and all MDA 40 feet. Baro-VNAV and YDP NA with Norfolk Intl altimeter setting. For uncompensated Baro-VNAV systems, LNAV/VNAV NA below -1.5°C or above 43°C.

MISSED APPROACH: Climb to 2000 direct NALDE and hold.

AWOS-3 <b>123.675</b>	NORFOLK APP CON <b>118.9 353.7</b>	GCO <b>135.075</b>	UNICOM <b>123.075 (CTAF) 0</b>
--------------------------	---------------------------------------	-----------------------	-----------------------------------



CATEGORY	A	B	C	D
LPV DA	311-1 292 (300-1)			
LNAV/VNAV DA	312-1 293 (300-1)			
LNAV MDA	480-1	461 (500-1)	480-1 $\frac{3}{8}$	461 (500-1 $\frac{3}{8}$ )

NE-3, 31 OCT 2024 to 28 NOV 2024

NE-3, 31 OCT 2024 to 28 NOV 2024