

WAAS CH 77608 W17A	APP CRS 174°	Rwy Idg 3700 TDZE 1479 Apt Elev 1479
--	------------------------	---

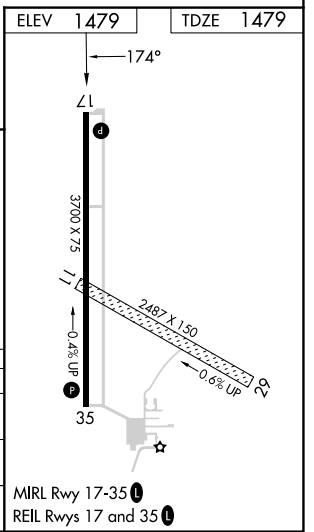
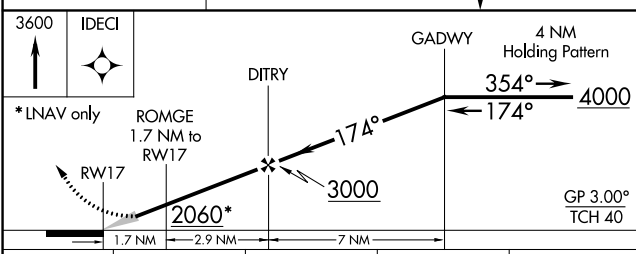
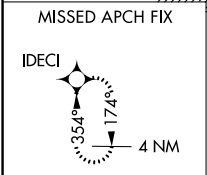
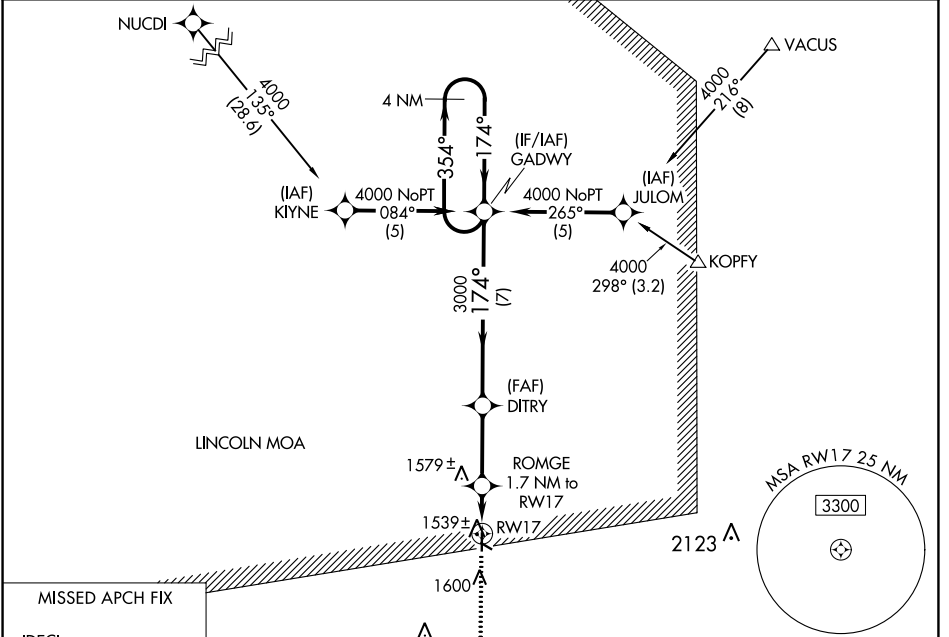
RNAV (GPS) RWY 17

FAIRBURY MUNI (F'BY)

NA DME/DME RNP-0.3 NA. Use Hebron Muni altimeter setting; if not received, use Beatrice Muni altimeter setting and increase DA to 1798 feet and all visibilities ¼ mile; increase all MDA 40 feet. Circling NA to Rwy's 11 and 29.

MISSED APPROACH: Climb to 3600 direct IDECI and hold.

HJH AWOS-3 118.525	MINNEAPOLIS CENTER 126.4 317.7	UNICOM 122.7 (CTAF)
------------------------------	--	-------------------------------



CATEGORY	A	B	C	D
LPV DA	1775-1	296 (300-1)		NA
RNAV MDA	1880-1	401 (500-1)		NA
CIRCLING	1960-1	481 (500-1)		NA

NC-2, 31 OCT 2024 to 28 NOV 2024

NC-2, 31 OCT 2024 to 28 NOV 2024