

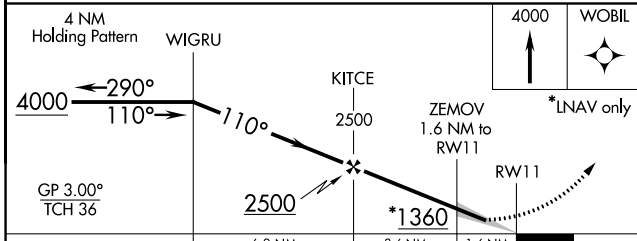
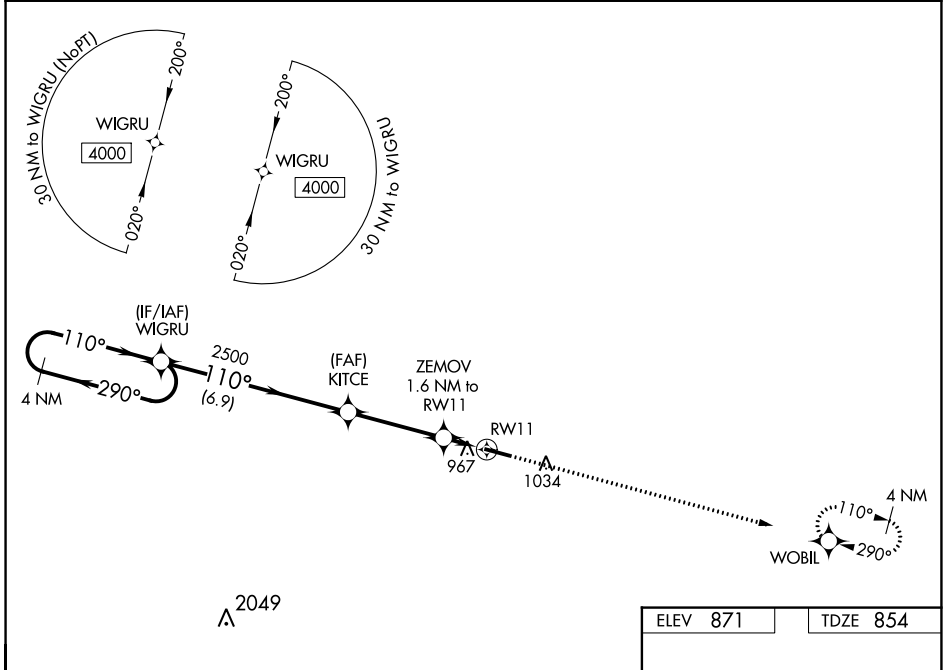
| | | |
|--|------------------------|---|
| WAAS CH 45722 W11A | APP CRS 110° | Rwy Idg 4876 TDZE 854 Apt Elev 871 |
|--|------------------------|---|

RNAV (GPS) RWY 11

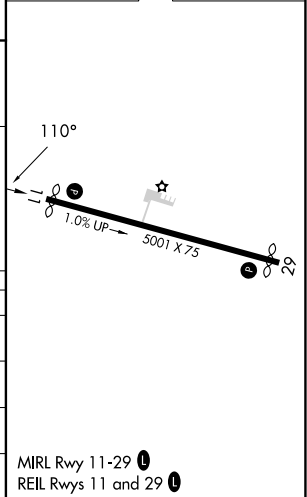
LEBANON SPRINGFIELD-GEORGE HOERTER FLD (6I2)

| | | |
|-----------|---|---|
| RNP APCH. | <p>▼ For uncompensated Baro-VNAV systems, LNAV/VNAV NA below -16°C or above 54°C. ▲ When local altimeter setting not received, use Danville altimeter setting and increase all DA 74 feet and all MDA 80 feet. Increase LPV, LNAV/VNAV, and Circling Cat D visibility 1/4 mile and LNAV Cats C/D 3/8 mile. Baro-VNAV NA when using Danville altimeter setting.</p> | MISSED APPROACH: Climb to 4000 direct WOBIL and hold, continue climb-in-hold to 4000. |
|-----------|---|---|

| | | |
|---------------------------|--|---------------------------------|
| AWOS-3P 119.725 | LOUISVILLE APP CON 132.075 327.0 | UNICOM 122.8 (CTAF) 0 |
|---------------------------|--|---------------------------------|



| | |
|----------|----------|
| ELEV 871 | TDZE 854 |
|----------|----------|



| CATEGORY | A | B | C | D |
|-------------------|-----------------------|-----------------------|-------------------------------|-----------------------|
| LPV DA | | 1104-1 | 250 (300-1) | |
| LNAV/VNAV DA | | 1159-1 1/8 | 305 (300-1 1/8) | |
| LNAV MDA | | 1220-1 | 366 (400-1) | |
| C CIRCLING | 1320-1 449 (500-1) | 1340-1 469 (500-1) | 1360-1 1/2 489 (500-1 1/2) | 1500-2 629 (700-2) |

MIRL Rwy 11-29 0
REIL Rwys 11 and 29 0

RNAV (GPS) RWY 11

SE-1, 31 OCT 2024 to 28 NOV 2024

SE-1, 31 OCT 2024 to 28 NOV 2024