

WAAS CH 77637 W 15A	APP CRS 146°	Rwy Idg 3999 TDZE 984 Apt Elev 984
---	------------------------	---

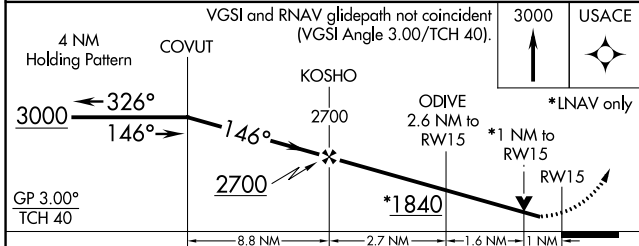
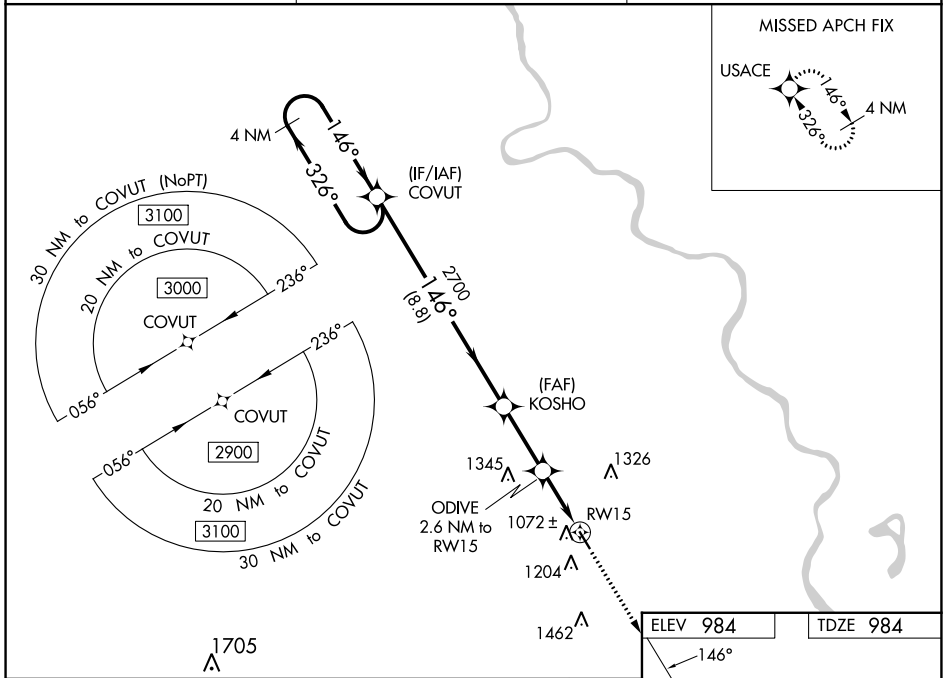
RNAV (GPS) RWY 15

BRENNER FLD (FNB)

⚠ NA For uncompensated Baro-VNAV systems, LNAV/VNAV NA below -21°C (-5°F) or above 54°C (130°F). DME/DME RNP-0.3 NA. When local altimeter setting not received, use Nebraska City altimeter setting and increase all DA 104 feet and increase all MDA 120 feet. VDP NA when using Nebraska City altimeter setting. Helicopter visibility reduction below ¾ SM NA. Baro-VNAV NA when using Nebraska City altimeter setting.

MISSED APPROACH: Climb to 3000 direct USACE and hold.

ASOS 119.275	ST JOSEPH APP CON 120.35 360.8	UNICOM 122.8 (CTAF) 📻
------------------------	--	--



CATEGORY	A	B	C	D
LPV DA	1234-1	250 (300-1)		NA
LNAV/VNAV DA	1234-1	250 (300-1)		NA
LNAV MDA	1340-1	356 (400-1)		NA
C CIRCLING	1560-1	576 (600-1)		NA

ELEV 984 | TDZE 984

146°

3999-15

33

MIRL Rwy 15-33 **📻**
REIL Rwy 15 and 33 **📻**

NC-2, 31 OCT 2024 to 28 NOV 2024

NC-2, 31 OCT 2024 to 28 NOV 2024