

WAAS CH <b>45520</b> <b>W33A</b>	APP CRS <b>326°</b>	Rwy Idg <b>3999</b> TDZE <b>984</b> Apt Elev <b>984</b>
--	------------------------	---

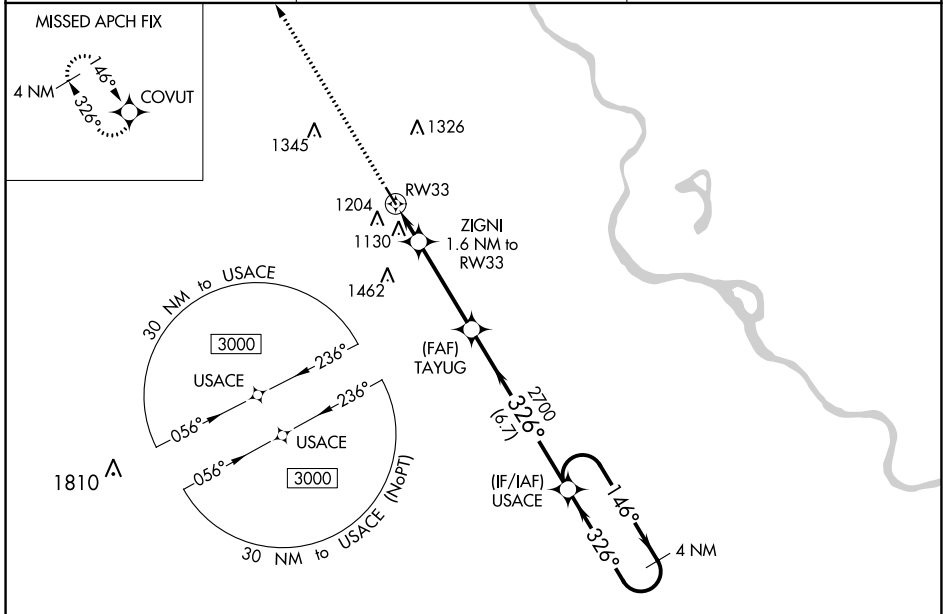
# RNAV (GPS) RWY 33

BRENNER FLD (FNB)

**NA** For uncompensated Baro-VNAV systems, LNAV/VNAV NA below -21°C (-5°F) or above 54°C (130°F). DME/DME RNP-0.3 NA. VDP and Baro-VNAV NA when using Nebraska City altimeter setting. When local altimeter not received, use Nebraska City altimeter setting and increase all DA 104 feet and all MDA 120 feet.

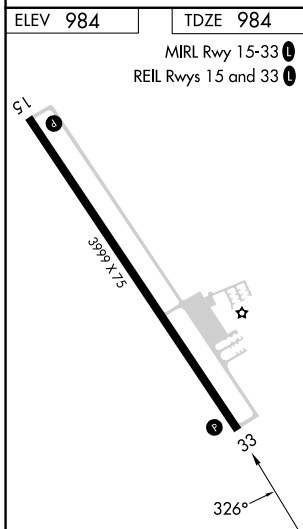
MISSED APPROACH: Climb to 3000 direct COVUT and hold.

ASOS <b>119.275</b>	ST JOSEPH APP CON <b>120.35 360.8</b>	UNICOM <b>122.8 (CTAF) 0</b>
------------------------	--	---------------------------------



NC-2, 31 OCT 2024 to 28 NOV 2024

NC-2, 31 OCT 2024 to 28 NOV 2024



3000	COVUT	TAYUG	USACE	4 NM Holding Pattern
*LNAV only.	ZIGNI 1.6 NM to RW33	2700	146°	3000
RW33	1520*	2700	326°	326°
1.6	3.7 NM	6.7 NM		GP 3.00° TCH 40
CATEGORY	A	B	C	D
LPV DA	1234-1	250 (300-1)		NA
LNAV/VNAV DA	1276-1	292 (300-1)		NA
LNAV MDA	1380-1	396 (400-1)		NA
<b>C</b> CIRCLING	1560-1	576 (600-1)		NA