

WAAS CH <b>45709</b> W06A	APP CRS <b>060°</b>	Rwy Idg <b>5501</b> TDZE <b>526</b> Apt Elev <b>526</b>
---------------------------------	------------------------	---------------------------------------------------------------

# RNAV (GPS) RWY 6

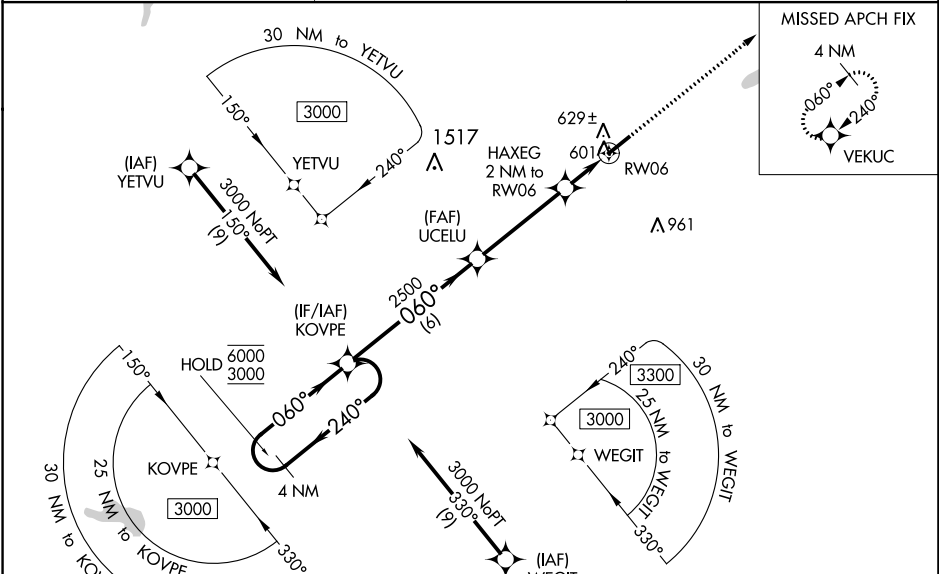
HENDERSON/OXFORD (HNZ)

RNP APCH - GPS.

▼ For uncompensated Baro-VNAV systems, LNAV/VNAV NA below -16°C or above 54°C.  
 ▲ When local altimeter setting not received, use Roxboro altimeter setting: increase all DA to 875 feet and all visibilities 1/8 SM; increase all MDA 80 feet and visibility Cats C and D 1/4 SM. Baro-VNAV and VDP NA when using Roxboro altimeter setting.  
 Rwy 6 helicopter visibility reduction below 3/4 SM NA.

MISSED APPROACH: Climb to 3000 direct VEKUC and hold.

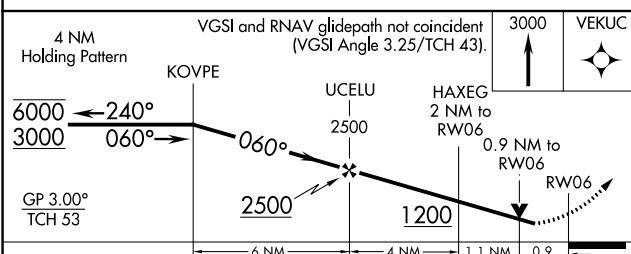
AWOS-3 <b>118.625</b>	RALEIGH APP CON <b>132.35 256.9</b>	UNICOM <b>122.8(CTAF)</b> 0
--------------------------	----------------------------------------	--------------------------------



SE-2, 31 OCT 2024 to 28 NOV 2024

SE-2, 31 OCT 2024 to 28 NOV 2024

ELEV 526	TDZE 526
----------	----------



CATEGORY	A	B	C	D
LPV DA		811-7/8	285 (300-7/8)	
LNAV/VNAV DA		810-7/8	284 (300-7/8)	
LNAV MDA		880-1	354 (400-1)	
CIRCLING	960-1	980-1	1100-1½	1280-2½
	434 (500-1)	454 (500-1)	574 (600-1½)	754 (800-2½)

