

VORTAC LNK <b>116.1</b> Chan <b>108</b>	APP CRS <b>015°</b>	Rwy Idg TDZE Apt Elev	<b>4201</b> <b>1497</b> <b>1499</b>
---	------------------------	-----------------------------	---

# VOR/DME RWY 35

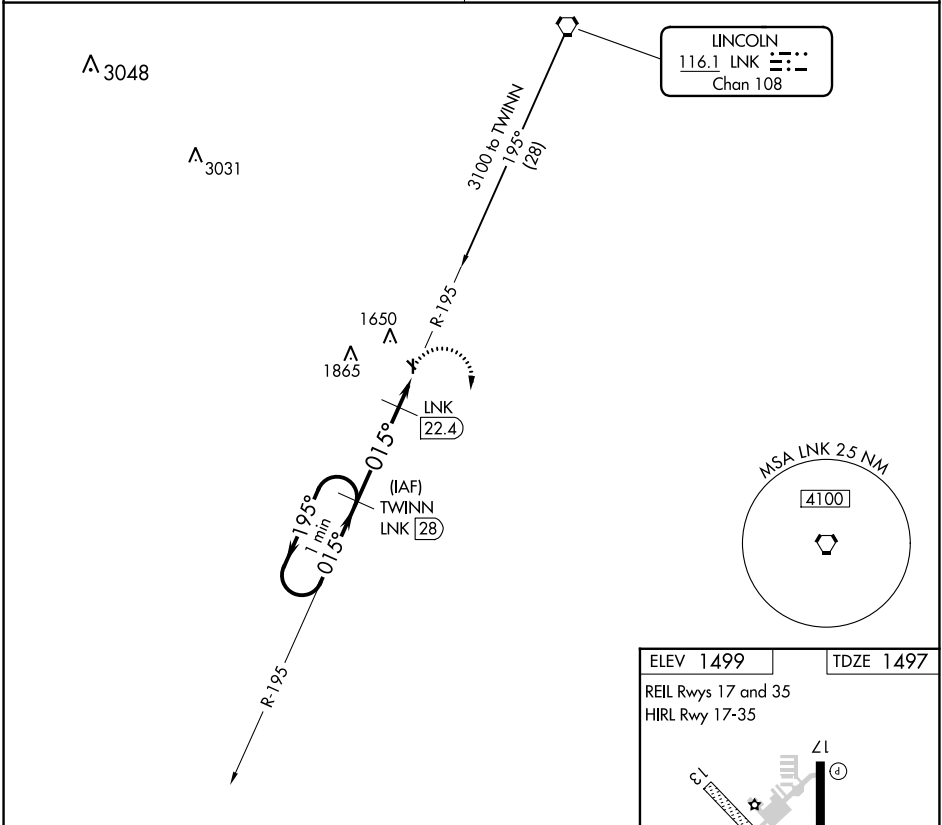
CRETE MUNI (CEK)

**NA** Use Lincoln altimeter setting; when not received, use Beatrice altimeter setting. Visibility reduction by helicopters NA.

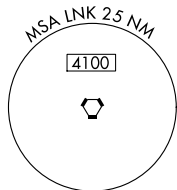
MISSED APPROACH: Climbing right turn to 3100 via LNK R-195 to TWINN/LNK 28 DME and hold.

OMAHA APP CON  
**124.0 270.3**

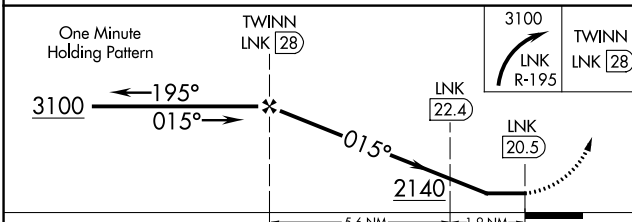
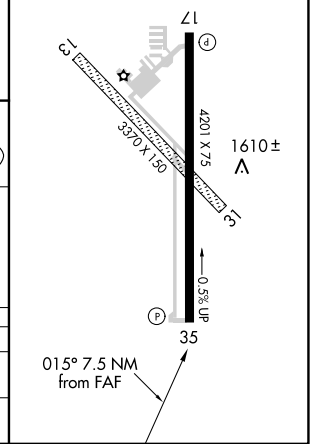
UNICOM  
**122.8 (CTAF)**



LINCOLN  
116.1 LNK  
Chan 108



ELEV 1499 TDZE 1497  
REIL Rwy 17 and 35  
HIRL Rwy 17-35



CATEGORY	A	B	C	D
S-35	2080-1 583 (600-1)	2080-1¼ 583 (600-1¼)		NA
CIRCLING	2140-1 641 (700-1)	2140-1¼ 641 (700-1¼)		NA

NC-2, 31 OCT 2024 to 28 NOV 2024

NC-2, 31 OCT 2024 to 28 NOV 2024