

MMALT SEVEN DEPARTURE (RNAV)

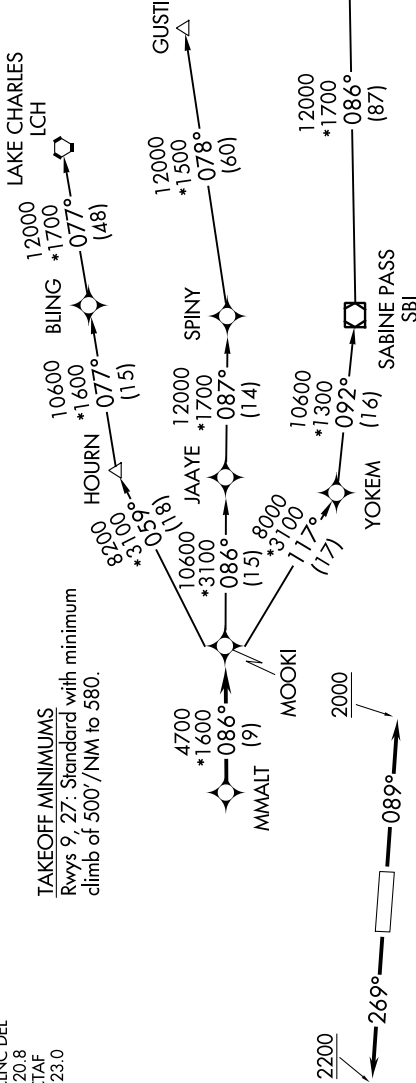
SC-5, 31 OCT 2024 to 28 NOV 2024

**TOP ALTITUDE:
ASSIGNED BY ATC**

RNAV 1 - DME/DME/IRU or GPS.
RADAR required.

HOUSTON DEP CON
123.8 257.7
AWOS-3
123.625
CLNC DEL
120.8
CTAF
123.0

TAKEOFF MINIMUMS
Rwys 9, 27: Standard with minimum
climb of 500'/NM to 580.



WSP AXH 25 NM

3100



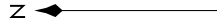
NOTE: GUSTI and LCH Transitions ATC assigned only for aircraft departing AXH, EFD, GLS, HPY, IWS, LBX, LVJ, SGR, TME, T00, T41 and 54T.

DEPARTURE ROUTE DESCRIPTION

TAKEOFF RUNWAY 9: Climb on heading 089° to 2000, for RADAR vectors to MMALT, thence. . . .
TAKEOFF RUNWAY 27: Climb on heading 269° to 2200, for RADAR vectors to MMALT, thence. . . .

. . . on track 086° to MOOKI, then on (transition). Maintain ATC assigned altitude.
Expect filed altitude 10 minutes after departure.

- GUSTI TRANSITION (MMALT7.GUSTI)
- LAKE CHARLES TRANSITION (MMALT7.LCH)
- WHITE LAKE TRANSITION (MMALT7.LLA)



NOTE: Chart not to scale.

SC-5, 31 OCT 2024 to 28 NOV 2024