

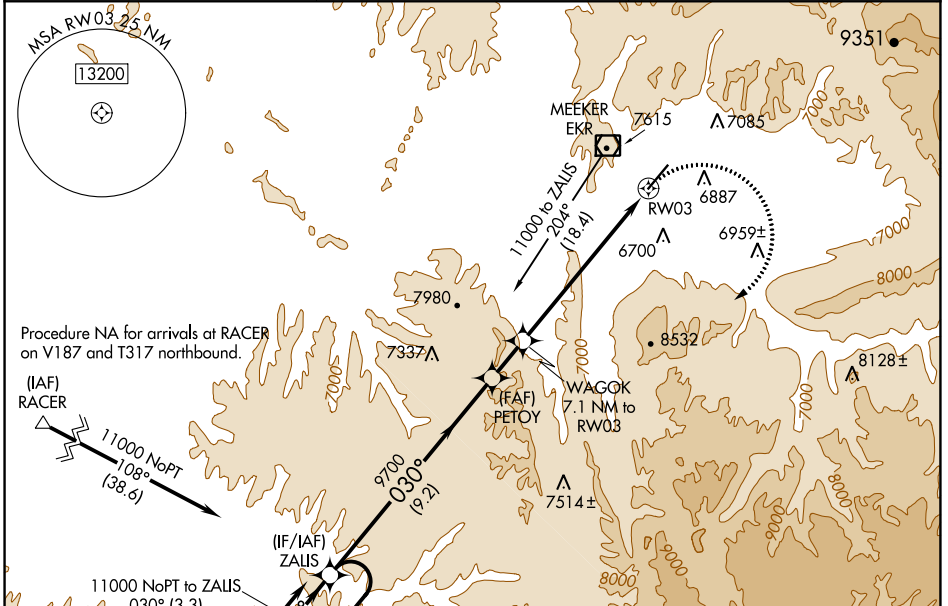
APP CRS	Rwy Idg	<b>6503</b>
<b>030°</b>	TDZE	<b>6381</b>
	Apt Elev	<b>6415</b>

# RNAV (GPS) RWY 3

MEEKER COULTER FLD (E/O)

RNP APCH - GPS.	MISSED APPROACH: Climbing right turn to 11000 direct ZALIS and hold.
<p>Rwy 3 helicopter visibility reduction below 3/4 SM NA. -25°C</p>	

ASOS <b>135.525</b>	DENVER CENTER <b>134.5 327.8</b>	UNICOM <b>122.8 (CTAF)</b>
------------------------	-------------------------------------	-------------------------------



Procedure NA for arrivals at RACER on V187 and T317 northbound.

(IAF) RACER 11000 NoPT 108° (138.6)

11000 NoPT to ZALIS 030° (3.3)

(IAF) HAPRA 200K (HOLD) 17500 11000

(IF/IAF) ZALIS 9700 030° (9.2)

7 NM

(IF/IAF) PETOY 9700 030° (9.2)

9.2 NM

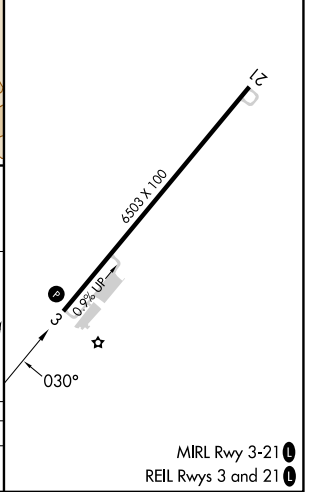
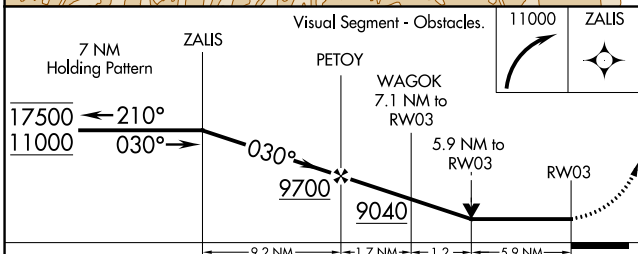
WAGOK 7.1 NM to RWY 03

11000 NoPT 125.8

(IAF) RIFLE 11000

Procedure NA for arrivals on RIL-VOR/DME airway radials 231 CW 334

ELEV 6415	TDZE 6381
-----------	-----------



CATEGORY	A	B	C	D
LNAV MDA	8300-1¼ 1919 (1900-1¼)	8300-1½ 1919 (1900-1½)	8300-3 1919 (1900-3)	NA

SW-1, 31 OCT 2024 to 28 NOV 2024

SW-1, 31 OCT 2024 to 28 NOV 2024