

APP CRS	Rwy Idg	5100
151°	TDZE	968
	Apt Elev	968

RNAV (GPS) RWY 15

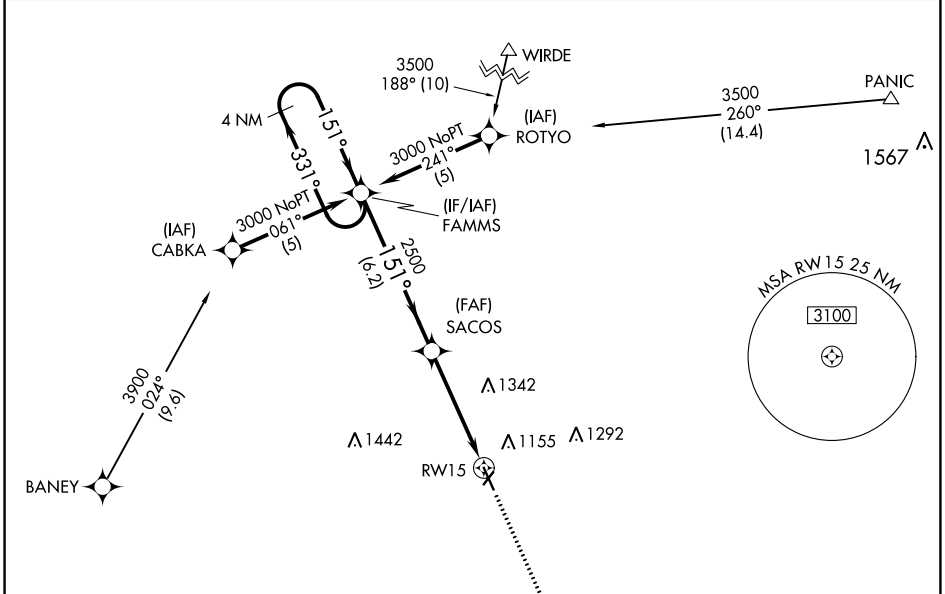
HARRY STERN (BWP)

RNP APCH-GPS.

NA Circling NA to Rwy 3 and 21. Straight-in/Circling Rwy 15 at night, operational VGSI required, remain on or above VGSI glidepath until threshold. When local altimeter setting not received, use Fergus Falls altimeter setting; increase all MDA 80 feet and visibility Circling Cat C and D ½ SM. VDP NA when using Fergus Falls altimeter setting. Rwy 15 helicopter visibility reduction below 1 SM NA.

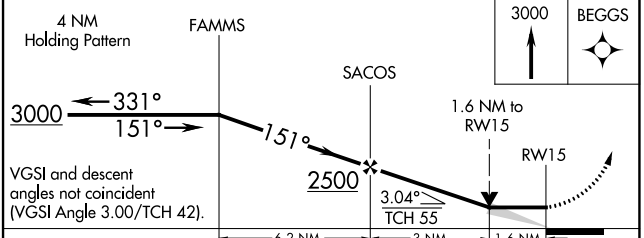
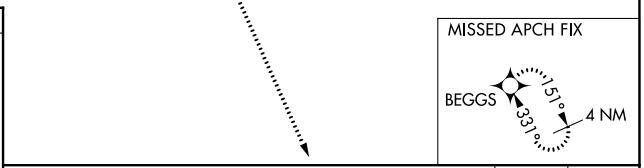
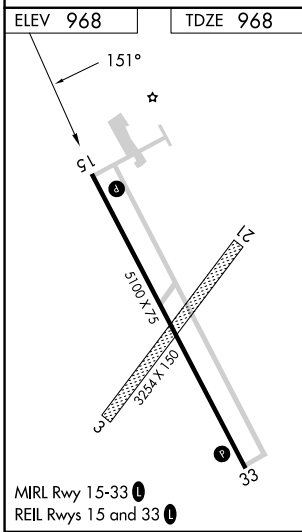
MISSED APPROACH: Climb to 3000 direct BEGGS and hold.

AWOS-3 127.875	MINNEAPOLIS CENTER 127.35 278.3	UNICOM 123.0 (CTAF) 0
--------------------------	---	---------------------------------



NC-1, 31 OCT 2024 to 28 NOV 2024

NC-1, 31 OCT 2024 to 28 NOV 2024



CATEGORY	A	B	C	D
LNAV MDA	1500-1	532 (600-1)	1500-1½ 532 (600-1½)	1500-1¾ 532 (600-1¾)
CIRCLING	1520-1	552 (600-1)	1660-2 692 (700-2)	1660-2¼ 692 (700-2¼)