

WAAS CH 93625 W10A	APP CRS 095°	Rwy Idg 6199 TDZE 4926 Apt Elev 4926
--	------------------------	---

RNAV (GPS) RWY 10

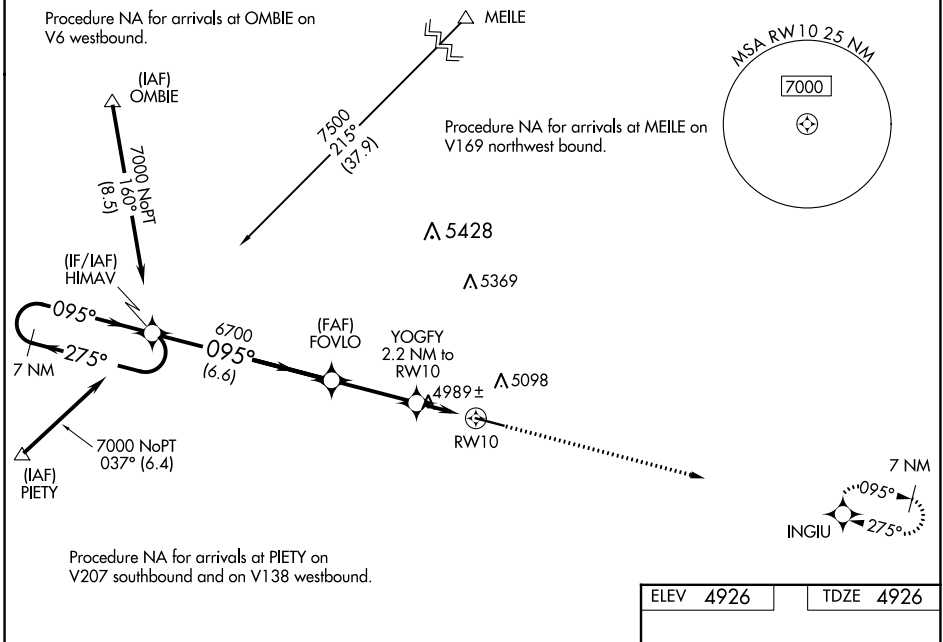
KIMBALL MUNI/ROBERT E ARRAJ FLD (IBM)

RNP APCH - GPS.

⚠ Straight-in Rwy 10 NA at night, Circling Rwy 10 NA at night. Rwy 10 helicopter visibility reduction below 1 SM NA. When local altimeter setting not received, use Sidney altimeter setting: increase all MDA 180 feet and visibility LP Cats C/D and LNAV Cats C/D ¼ SM and Circling Cat C ¾ SM and Cat D ½ SM.

MISSED APPROACH: Climb to 6500 direct INGIU and hold.

AWOS-3 118.075	DENVER CENTER 125.9 284.7	UNICOM 122.8 (CTAF) 0
--------------------------	-------------------------------------	---------------------------------



NC-2, 31 OCT 2024 to 28 NOV 2024

NC-2, 31 OCT 2024 to 28 NOV 2024

7 NM Holding Pattern		HIMAV		6500		INGIU	
7000 ← 275°		→ 095°		↑		✦	
6700		FOVLO		YOGFY 2.2 NM to RWY 10		RWY 10	
6700		3.00' TCH 40		5660		095°	
6.6 NM		3.3 NM		2.2 NM		6199 X.75 -0.4% UP	
CATEGORY	A	B	C	D	REIL Rwy 10 and 28 MIRL Rwy 10-28 0		
LP MDA	5240-1 314 (400-1)		5240-7/8 314 (400-7/8)				
LNAV MDA	5240-1 314 (400-1)		5240-7/8 314 (400-7/8)				
CIRCLING	5460-1 534 (600-1)		5500-1½ 574 (600-1½)		5520-2 594 (600-2)		