

WAAS CH 42503 W28A	APP CRS 275°	Rwy Idg 6199 TDZE 4908 Apt Elev 4926
--	------------------------	---

RNAV (GPS) RWY 28

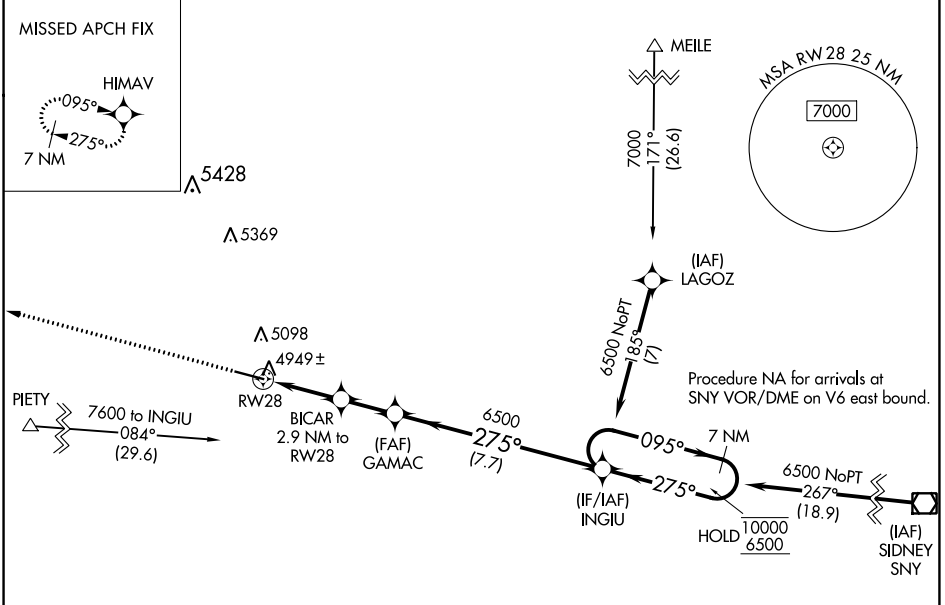
KIMBALL MUNI/ROBERT E ARRAJ FLD (IBM)

RNP APCH - GPS.

▼ For uncompensated Baro-VNAV systems, LNAV/VNAV NA below -24°C or above 54°C.
 ▲ Circling Rwy 10 NA at night.

MISSED APPROACH:
 Climb to 7000 direct HIMAV and hold.

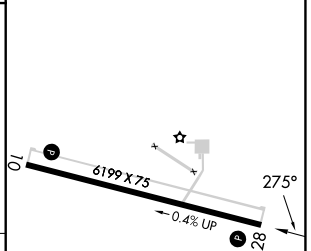
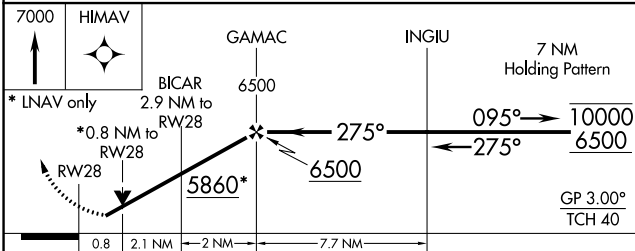
AWOS-3 118.075	DENVER CENTER 125.9 284.7	UNICOM 122.8 (CTAF) 0
--------------------------	-------------------------------------	---------------------------------



NC-2, 31 OCT 2024 to 28 NOV 2024

NC-2, 31 OCT 2024 to 28 NOV 2024

ELEV 4926	TDZE 4908
-----------	-----------



CATEGORY	A	B	C	D
LPV DA		5158-1	250 (300-1)	
LNAV/VNAV DA		5158-1	250 (300-1)	
LNAV MDA		5200-1	292 (300-1)	
CIRCLING	5460-1	534 (600-1)	5500-1½ 574 (600-1½)	5520-2 594 (600-2)

REIL Rwy 10 and 28
 MRL Rwy 10-28 0