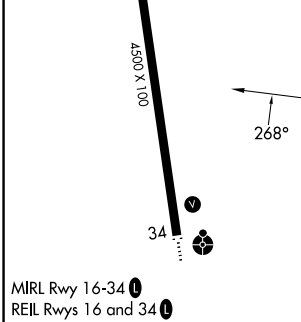
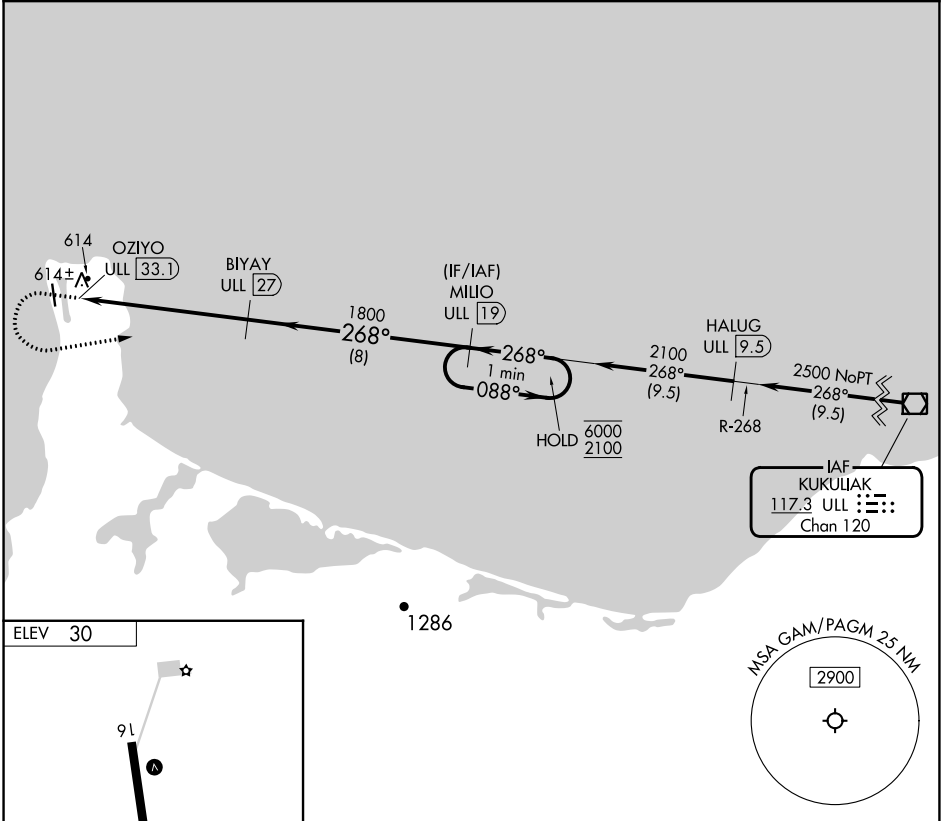


VOR/DME ULL <b>117.3</b> Chan <b>120</b>	APP CRS <b>268°</b>	Rwy Idg TDZE Apt Elev	<b>N/A</b> <b>N/A</b> <b>30</b>
--	------------------------	-----------------------------	---------------------------------------

**VOR-A**  
GAMBELL (GAM)(PAGM)

DME required.		MISSED APPROACH: Climb to 1200 then climbing left turn to 2100 heading 071° and on ULL VOR/DME R-268 to MILIO/ULL 19 DME and hold.	
<p>Circling NA east of Rwy 16-34. -26°C</p>			
AWOS-3P <b>125.9</b>	ANCHORAGE CENTER <b>132.2 281.4</b>	NOME RADIO <b>122.0</b>	CTAF <b>122.7 0</b>



1200	2100	ULL R-268	MILIO ULL 19	MILIO ULL 19	One Minute Holding Pattern
hdg 071°					
CATEGORY	A	B	C	D	
CIRCLING	1000-1¼ 970 (1000-1¼)	1000-1½ 970 (1000-1½)	1000-3	970 (1000-3)	

AK, 31 OCT 2024 to 26 DEC 2024

AK, 31 OCT 2024 to 26 DEC 2024