

WAAS CH <b>70339</b> <b>W34A</b>	APP CRS <b>340°</b>	Rwy Idg TDZE <b>1107</b> Apt Elev <b>1107</b>	<b>3400</b>
--	------------------------	---	-------------

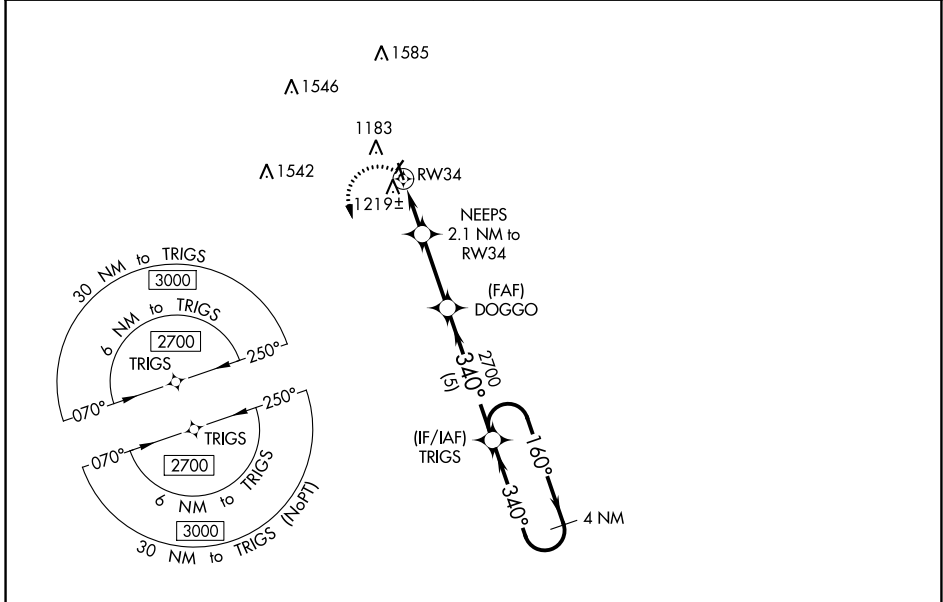
# RNAV (GPS) RWY 34

BLUE EARTH MUNI (SBU)

**NA** Baro-VNAV NA. Use Fairmont altimeter setting; when not received, use Forest City altimeter setting and increase all DA 45 feet and all MDA 60 feet; increase LPV all Cats visibility 1/8 mile, LNAV/VNAV all Cats, LNAV Cat C and Circling Cat C visibility 1/4 mile. DME/DME RNP-0.3 NA. Helicopter visibility reduction below 1 SM NA. Circling NA to Rwy's 3 and 21.

**MISSED APPROACH:** Climbing left turn to 2700 direct TRIGS and hold.

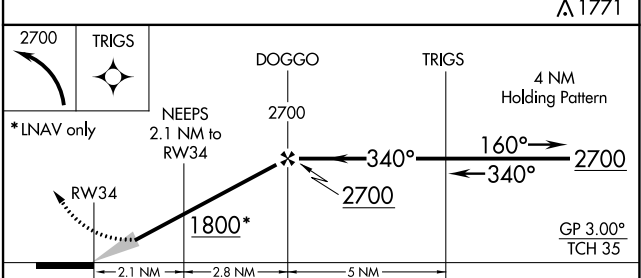
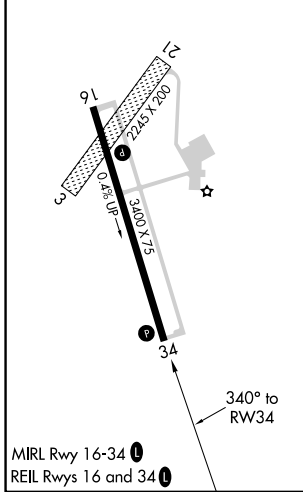
FRM AWOS-3PT <b>120.025</b>	MINNEAPOLIS CENTER <b>127.75 257.7</b>	GCO <b>121.725</b>	UNICOM <b>122.8 (CTAF) 0</b>
--------------------------------	---	-----------------------	---------------------------------



NC-1, 31 OCT 2024 to 28 NOV 2024

NC-1, 31 OCT 2024 to 28 NOV 2024

ELEV 1107	TDZE 1107
-----------	-----------



CATEGORY	A	B	C	D
LPV DA	1398-1 291 (300-1)			NA
LNAV/VNAV DA	1548-1½ 441 (500-1½)			NA
LNAV MDA	1520-1	413 (500-1)	1520-1½ 413 (500-1½)	NA
<b>C</b> CIRCLING	1560-1	453 (500-1)	1720-1¾ 613 (700-1¾)	NA