

LOC/DME I-HRJ <b>108.35</b> Chan 20 (Y)	APP CRS <b>048°</b>	Rwy Idg TDZE Apt Elev	<b>5005</b> <b>196</b> <b>202</b>
---	------------------------	-----------------------------	---

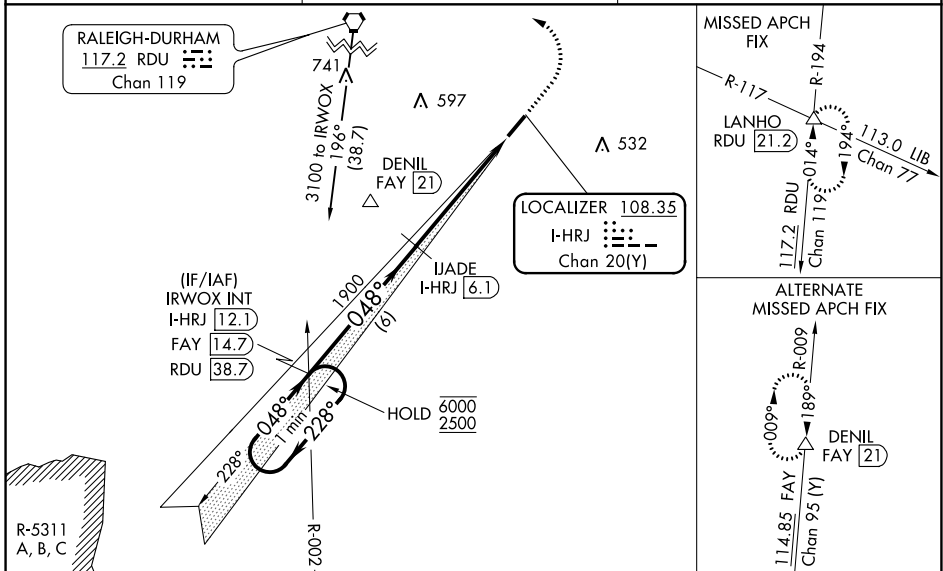
# LOC RWY 5

HARNETT RGNL JETPORT (HRJ)

DME required.

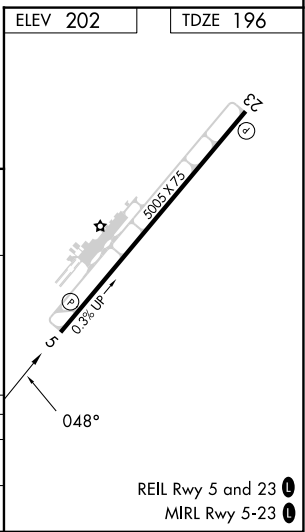
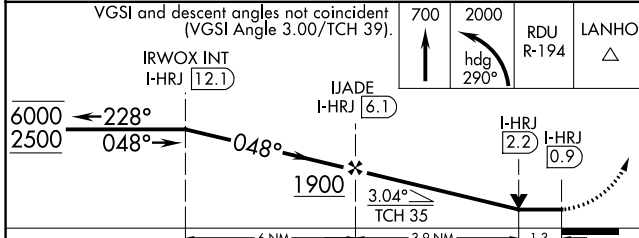
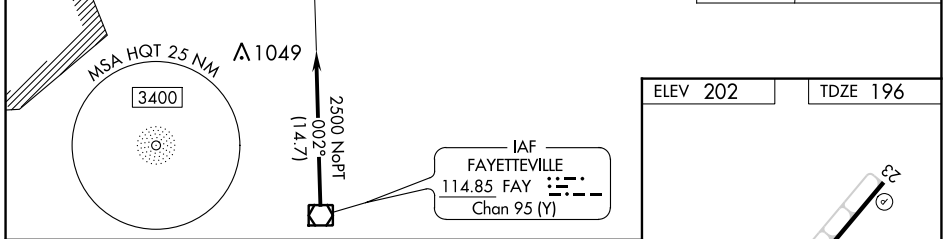
MISSED APPROACH: Climb to 700 then climbing left turn to 2000 on heading 290° and RDU R-194 to LANHO INT/RDU 21.2 DME and hold.

AWOS-3 <b>119.025</b>	FAYETTEVILLE APP CON <b>125.175 285.575</b>	UNICOM <b>122.7 (CTAF)</b>
--------------------------	--	-------------------------------



SE-2, 31 OCT 2024 to 28 NOV 2024

SE-2, 31 OCT 2024 to 28 NOV 2024



CATEGORY	A	B	C	D
S-5	640-1 444 (500-1)		640-1 $\frac{3}{8}$ 444 (500-1 $\frac{3}{8}$ )	NA
CIRCLING	660-1 458 (500-1)	720-1 518 (600-1)	780-1 $\frac{1}{2}$ 578 (600-1 $\frac{1}{2}$ )	NA