

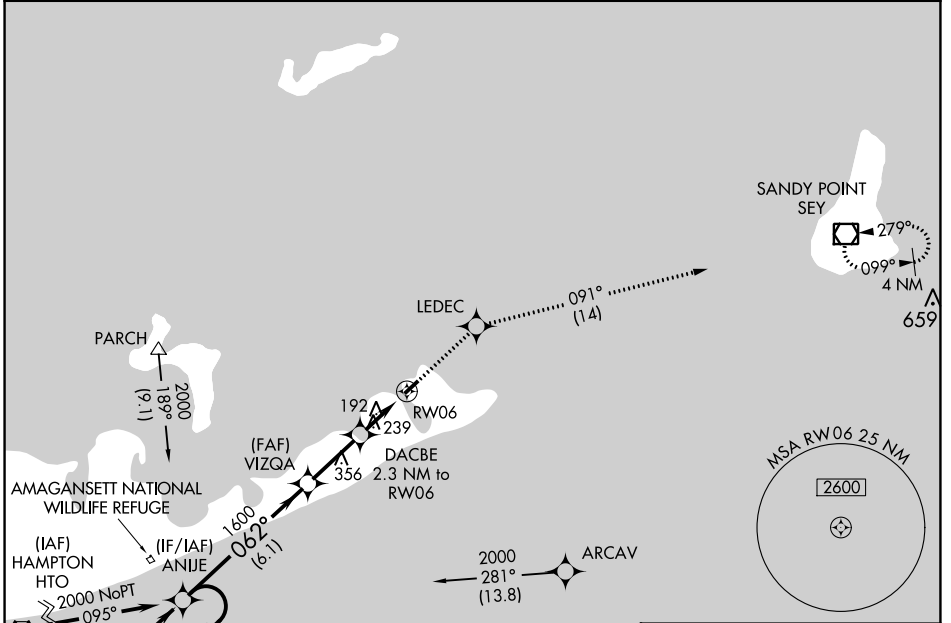
APP CRS	Rwy Idg	2944
062°	TDZE	6
	Apt Elev	7

RNAV (GPS) RWY 6

MONTAUK (MTP)

RNP APCH - GPS.		MISSED APPROACH: Climb to 2000 direct LEDEC and on track 091° to SEY VOR/DME and hold.
▼	Use Graton-New London altimeter setting; when not received, use Block Island State altimeter setting; increase all MDA 20 feet and visibility LNAV Cats C and D ½ SM	
▲ NA	and Circling Cat D ¼ SM. Procedure NA at night. Helicopter visibility reduction below 1 SM NA.	

GON ASOS 127.0	NEW YORK APP CON 125.975 343.65	UNICOM 122.7 (CTAF)	121.7 0
--------------------------	---	-------------------------------	----------------

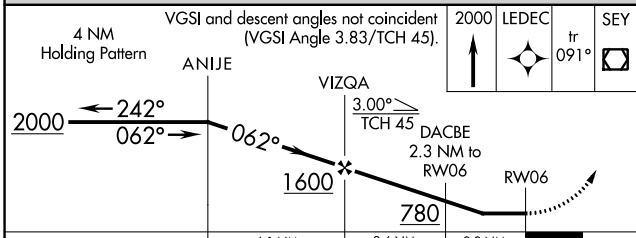


NE-2, 31 OCT 2024 to 28 NOV 2024

NE-2, 31 OCT 2024 to 28 NOV 2024

Procedure NA for arrivals on HTO VORTAC airway radials 039 CW 079.

Procedure NA for arrivals on HTO VORTAC airway radials 039 CW 079.



CATEGORY	A	B	C	D
LNAV MDA	540-1	534 (600-1)	540-1½	534 (600-1½)
CIRCLING	580-1	573 (600-1)	580-1½ 573 (600-1½)	740-2¼ 733 (800-2¼)

