

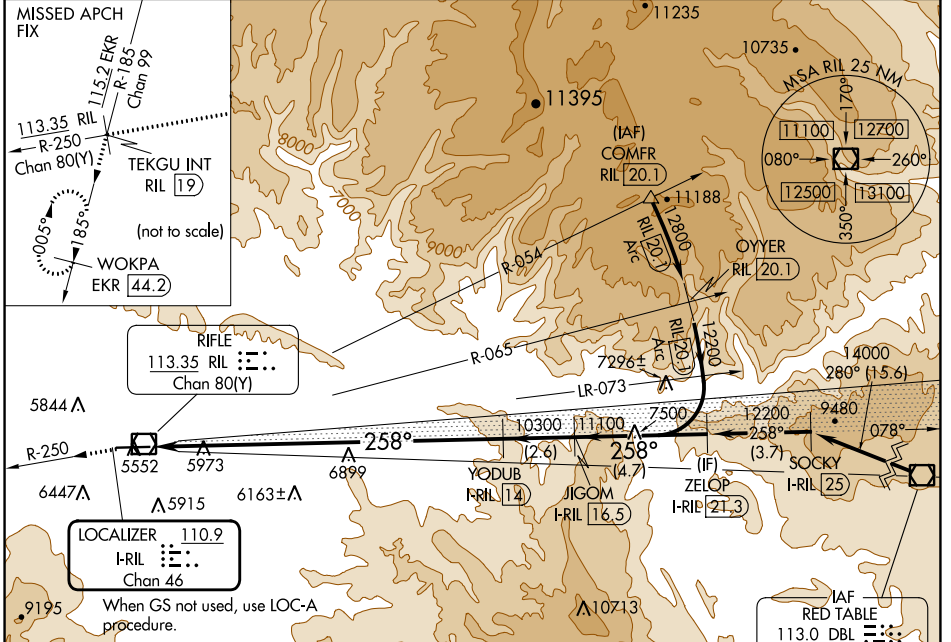
LOC/DME I-RIL 110.9 Chan 46	APP CRS 258°	Rwy Idg TDZE Apt Elev 7000 5537 5537
--	------------------------	--

ILS RWY 26

RIFLE GARFIELD COUNTY (R.I.L)

DME required.	ODALS	MISSED APPROACH: Climb to 14000 on RIL VOR/DME R-250 to TEKGU INT/RIL 19 DME and on EKR VOR/DME R-185 to WOKPA/EKR 44.2 DME and hold. Missed approach requires a minimum climb of 340 feet per NM to 10300; if unable to meet climb gradient, see LOC-A.
<p>▼</p> <p>▲ Rwy 26 helicopter visibility reduction below 3/4 SM NA.</p> <p>☁ -14°C</p>		

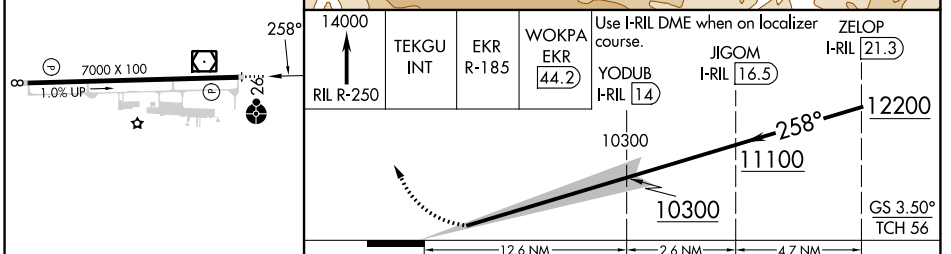
ASOS 135.275	DENVER CENTER 134.95 327.075	UNICOM 122.8 (CTAF) 0
------------------------	--	---------------------------------



ELEV 5537	TDZE 5537
-----------	-----------

When GS not used, use LOC-A procedure.

Procedure NA for arrival on DBL VOR/DME airway radials 244 CW 297.



CATEGORY	A	B	C	D
S-ILS 26	6800-4		1263 (1300-4)	

SW-1, 31 OCT 2024 to 28 NOV 2024

SW-1, 31 OCT 2024 to 28 NOV 2024