

APP CRS	Rwy Idg	7000
259°	TDZE	5537
	Apt Elev	5537

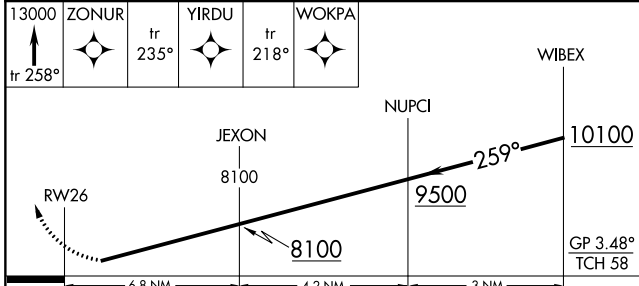
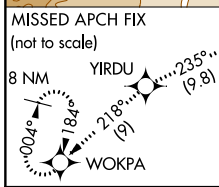
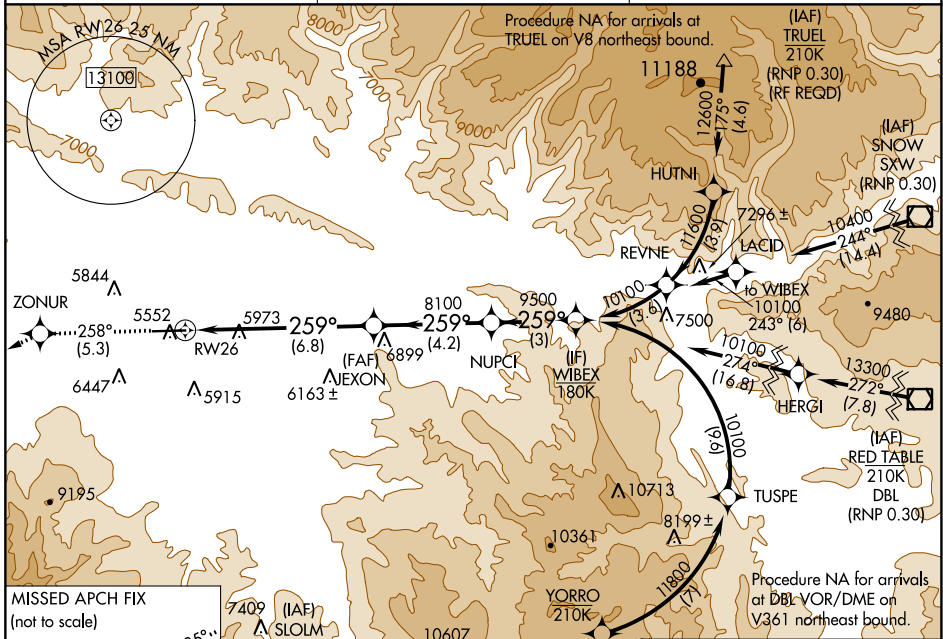
RNAV (RNP) Y RWY 26

RIFLE GARFIELD COUNTY (R.I.L)

When VGSI inoperative, procedure NA at night. For uncompensated Baro-VNAV systems, procedure NA below -24°C (-11°F) or above 38°C (100°F). GPS required.

ODALS MISSED APPROACH: Climb to 13000 on track 258° to ZONUR and track 235° to YIRDU and track 218° to WOKPA and hold, continue climb-in-hold to 13000.

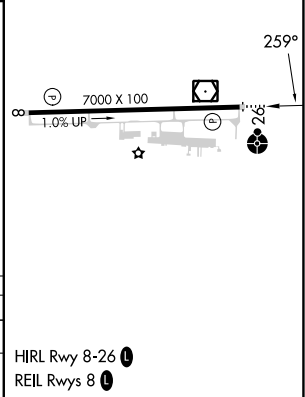
ASOS 135.275	DENVER CENTER 134.95 327.075	UNICOM 122.8 (CTAF) 0
------------------------	--	---------------------------------



ELEV 5537	TDZE 5537
-----------	-----------

CATEGORY	A	B	C	D
RNP 0.30 DA	6387-2½		850 (900-2½)	NA

AUTHORIZATION REQUIRED



HIRL Rwy 8-26 0
REIL Rwy 8 0

SW-1, 31 OCT 2024 to 28 NOV 2024

SW-1, 31 OCT 2024 to 28 NOV 2024