

APP CRS	Rwy Idg	<b>2805</b>
<b>346°</b>	TDZE	<b>208</b>
	Apt Elev	<b>208</b>

# RNAV (GPS) RWY 34

LINCOLN RGNL (L.R.G)

RNP APCH - GPS.

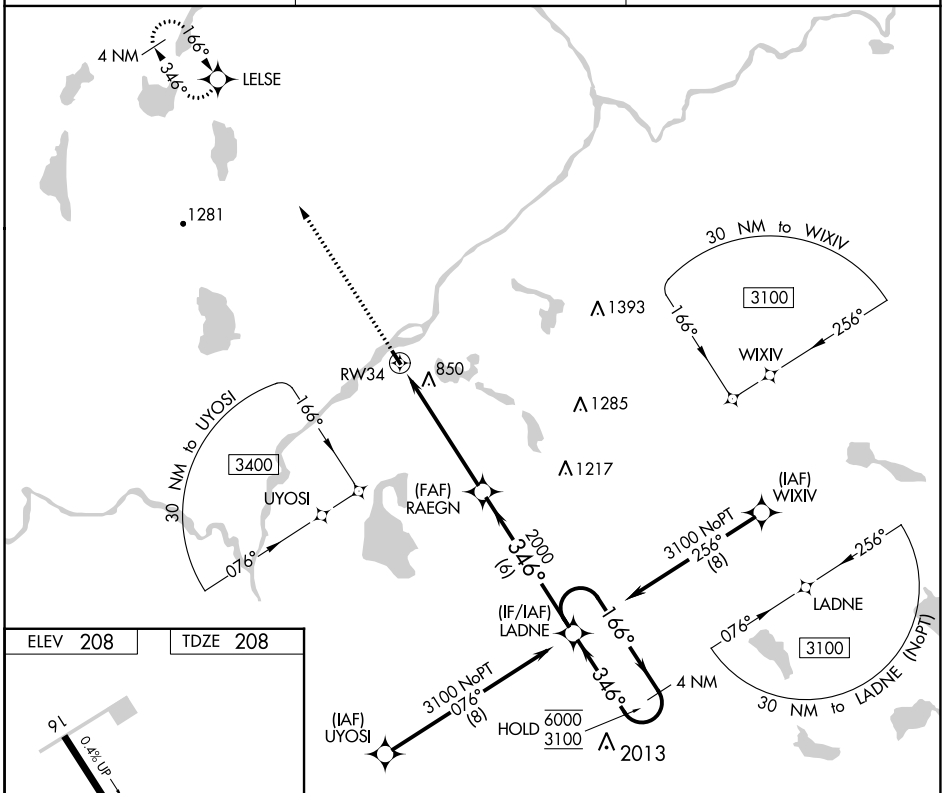
**NA** Procedure NA at night. Rwy 34 helicopter visibility reduction below 1 SM NA. Use Millinocket altimeter setting; when not received, use Bangor Intl altimeter setting and increase all MDA 20 feet.

**MISSED APPROACH:**  
Climb to 2800 direct LESE and hold.

MLT ASOS  
**135.225**

BOSTON CENTER  
**124.25 290.5**

UNICOM  
**122.8 (CTAF) 0**



NE-1, 31 OCT 2024 to 28 NOV 2024

NE-1, 31 OCT 2024 to 28 NOV 2024

ELEV 208	TDZE 208
----------	----------

WATER RWY: 06W - 24W  
2400 X 100

MIRL Rwy 16-34 0  
REIL Rws 16 and 34 0

2800	LESE	Visual Segment - Obstacles.	LADNE	4 NM Holding Pattern
↑	✧			
RAEGN		LADNE		
RWY34		166° → 6000		
		← 346° 3100		
5.5 NM		6 NM		
CATEGORY	A	B	C	D
LNAV MDA	1180-1¼ 972 (1000-1¼)	1180-1½ 972 (1000-1½)	NA	
CIRCLING	1240-1¼ 1032 (1100-1¼)	1240-1½ 1032 (1100-1½)	NA	