

|  |                        |   |             |
|--|------------------------|---|-------------|
| WAAS<br>CH <b>61140</b><br><b>W35A</b> | APP CRS<br><b>354°</b> | Rwy Idg<br>TDZE <b>1003</b><br>Apt Elev <b>1003</b> | <b>5103</b> |
|--|------------------------|---|-------------|

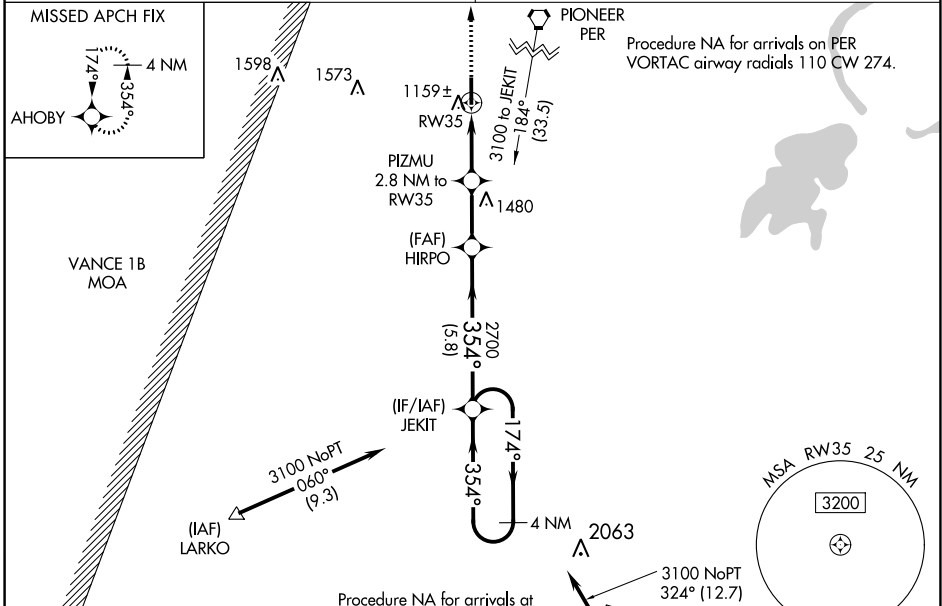
# RNAV (GPS) RWY 35

PERRY MUNI (F22)

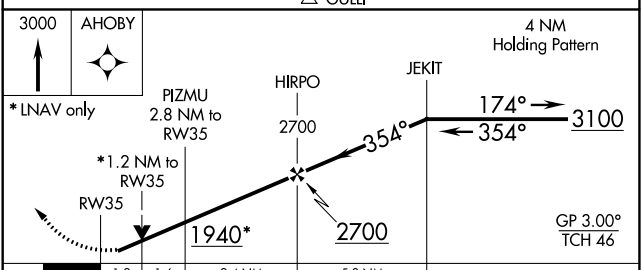
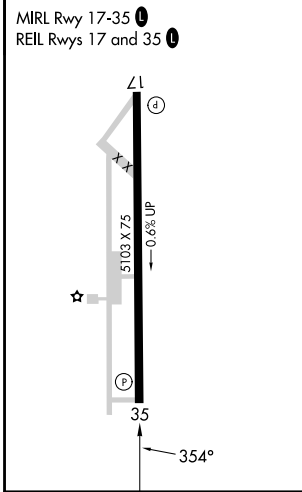
**NA** For uncompensated Baro-VNAV systems, procedure NA below -16°C (4°F) or above 54°C (130°F). DME/DME RNP-0.3 NA. Baro-VNAV and VDP NA when using Ponca City altimeter setting. Rwy 35 helicopter visibility reduction below 3/4 SM NA. Obtain local altimeter setting on CTAF; when not received, use Ponca City altimeter setting and increase all DA 53 feet and all visibility 1/8 SM, increase all MDAs 60 feet and Cat C visibility 1/4 SM.

**MISSED APPROACH:** Climb to 3000 direct AHOBY and hold.

KANSAS CITY CENTER **127.8 319.1** UNICOM **122.8 (CTAF) 0**



|           |           |
|-----------|-----------|
| ELEV 1003 | TDZE 1003 |
|-----------|-----------|



| CATEGORY          | A          | B               | C                             | D  |
|-------------------|------------|-----------------|-------------------------------|----|
| LPV DA            | 1253-3/4   | 250 (300-3/4)   |                               | NA |
| LNAV/VNAV DA      | 1330-1 1/8 | 327 (400-1 1/8) |                               | NA |
| LNAV MDA          | 1420-1     | 417 (500-1)     | 1420-1 1/8<br>417 (500-1 1/8) | NA |
| <b>C</b> CIRCLING | 1480-1     | 477 (500-1)     | 1620-1 3/4<br>617 (700-1 3/4) | NA |

SC-1, 31 OCT 2024 to 28 NOV 2024

SC-1, 31 OCT 2024 to 28 NOV 2024