

WAAS CH <b>97707</b> <b>W12A</b>	APP CRS <b>119°</b>	Rwy Idg TDZE Apt Elev	<b>5500</b> <b>2431</b> <b>2432</b>
--	------------------------	-----------------------------	---

# RNAV (GPS) RWY 12

CALDWELL EXEC (EUL)

RNP APCH-GPS.

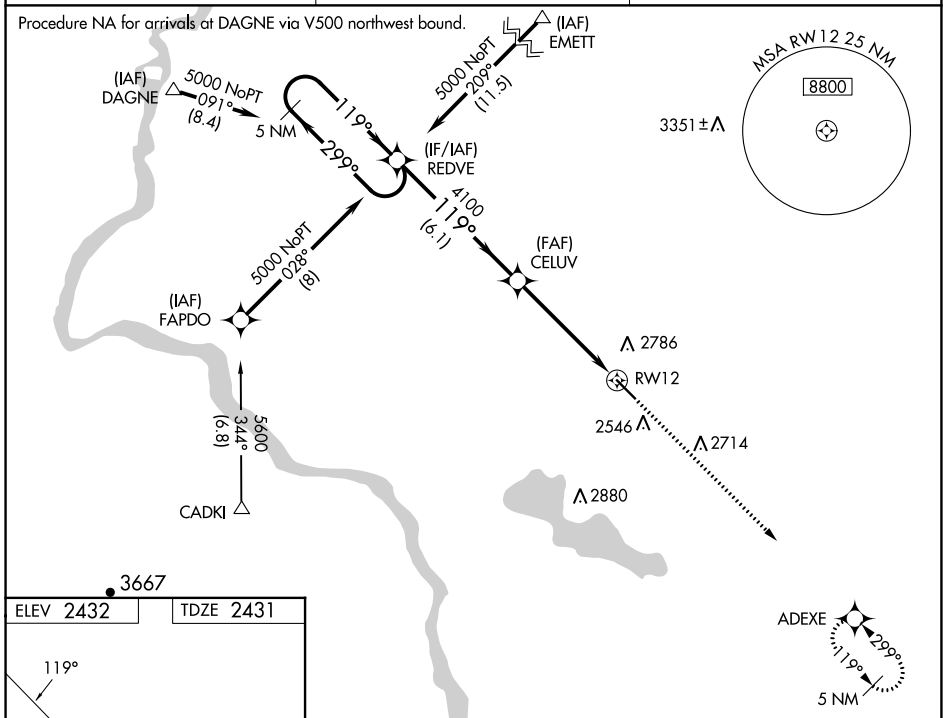
▼ Procedure NA at night. Rwy 12 helicopter visibility reduction below 1 SM NA.  
 ▲ Baro-VNAV NA when using Boise altimeter setting. For uncompensated Baro-VNAV systems, LNAV/VNAV NA below -19°C or above 44°C. When local altimeter setting not received, use Boise altimeter setting and increase all DA/MDA 120 feet and all visibilities ½ mile.

MISSED APPROACH: Climb to 5000 direct ADEXE and hold.

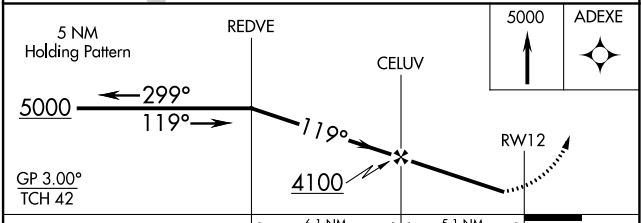
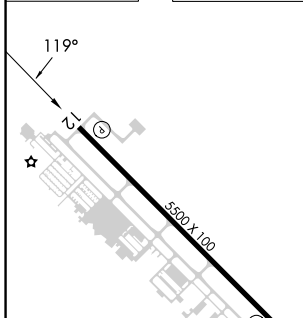
AWOS-3PT  
**135.075**

BIG SKY APP CON  
**119.6 269.4**

UNICOM  
**123.0 (CTAF) 0**



ELEV 2432	TDZE 2431
-----------	-----------



CATEGORY	A	B	C	D
LPV DA	2700-1 269 (300-1)			
LNAV/VNAV DA	2994-2 563 (600-2)			
LNAV MDA	2840-1	409 (500-1)	2840-1½	409 (500-1½)

NW-1, 31 OCT 2024 to 28 NOV 2024

NW-1, 31 OCT 2024 to 28 NOV 2024