

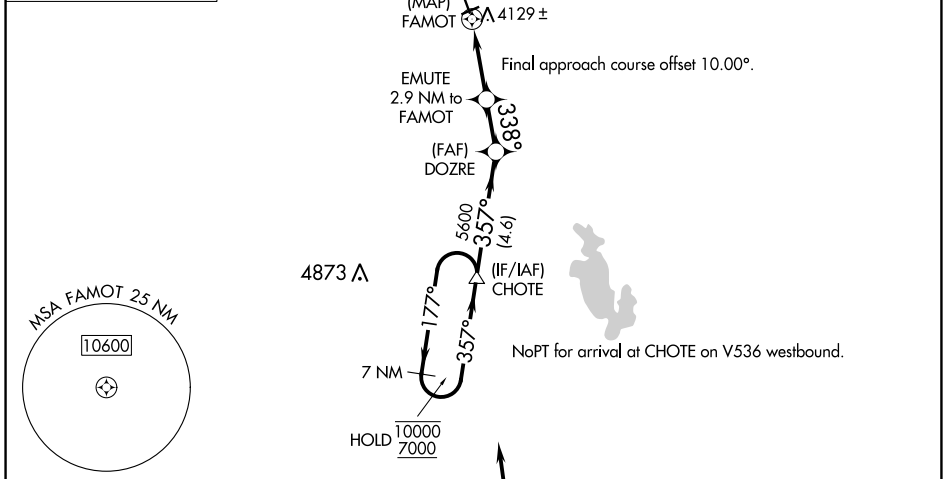
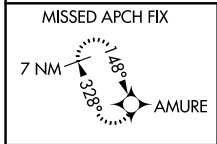
APP CRS <b>338°</b>	Rwy ldg <b>5000</b>
	TDZE <b>3943</b>
	Apt Elev <b>3947</b>

# RNAV (GPS) RWY 33

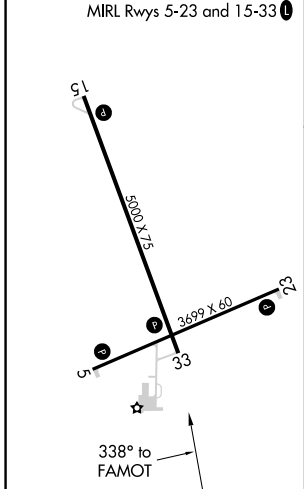
CHOTEAU (CII)

RNP APCH.	MISSED APPROACH: Climb to 6600 direct AMURE and hold.
NA Rwy 33 helicopter visibility reduction below 3/4 SM NA.	

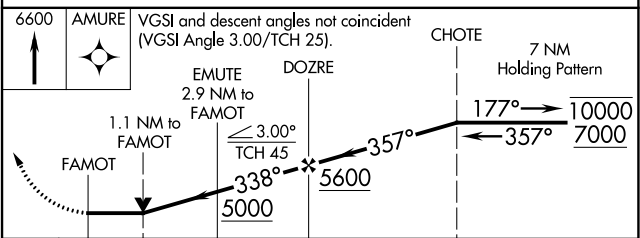
AWOS-2 <b>119.275</b>	SALT LAKE CITY CENTER <b>133.4 285.4</b>	UNICOM <b>122.8 (CTAF) ①</b>
--------------------------	---	---------------------------------



ELEV 3947	TDZE 3943
-----------	-----------



6600	AMURE	VGSI and descent angles not coincident (VGSI Angle 3.00/TCH 25).	CHOTE	7 NM Holding Pattern
		EMUTE 2.9 NM to FAMOT	DOZRE	
		1.1 NM to FAMOT		
		FAMOT		
		338°	357°	177°
		5000	5600	10000
		3.00°		TCH 45
		7000 NoPT		
		340° (1.2.3)		
		(IAF) SHIMY		



CATEGORY	A	B	C	D
INAV MDA	4380-1	437 (500-1)	4380-1¼	437 (500-1¼)
CIRCLING	4440-1	493 (500-1)	4600-1¾ 653 (700-1¾)	4900-3 953 (1000-3)

NW-1, 31 OCT 2024 to 28 NOV 2024

NW-1, 31 OCT 2024 to 28 NOV 2024