

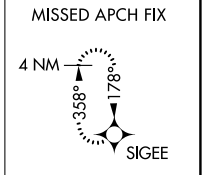
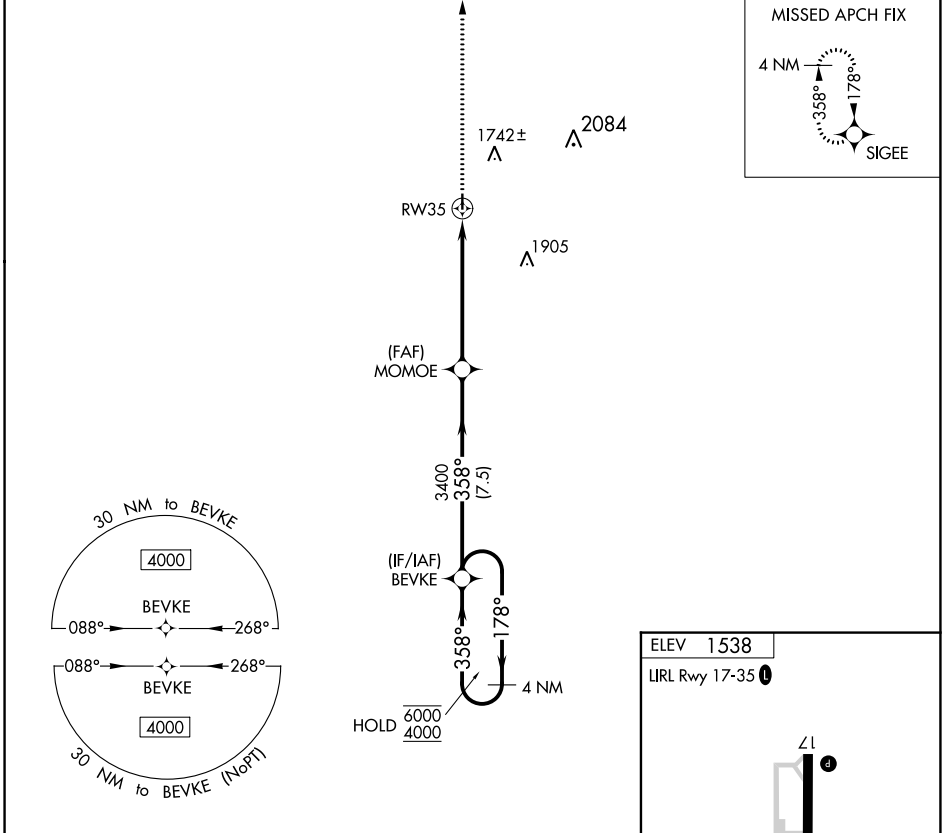
APP CRS <b>358°</b>	Rwy Idg TDZE Apt Elev	<b>N/A</b> <b>N/A</b> <b>1538</b>
------------------------	-----------------------------	---

# RNAV (GPS)-A

SIBLEY MUNI (ISB)

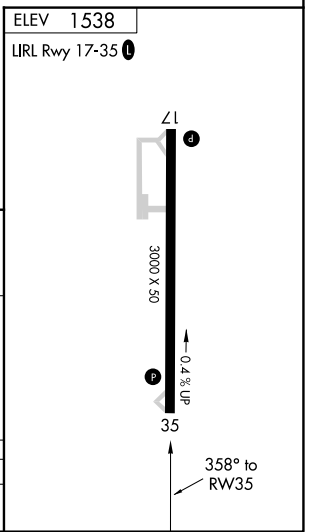
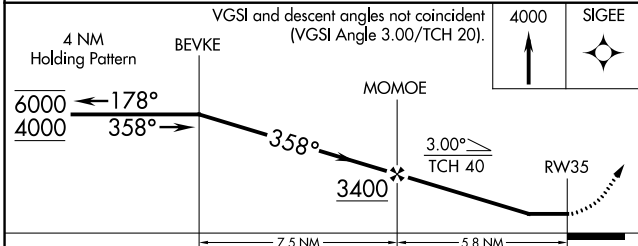
RNP APCH.	Procedure NA at night. Use Worthington altimeter setting.	MISSED APPROACH: Climb to 4000 direct SIGEE and hold.
-----------	--	---

OTG AWOS-3PT <b>121.075</b>	MINNEAPOLIS CENTER <b>132.05 317.4</b>	UNICOM <b>122.8 (CTAF) 0</b>
--------------------------------	---	---------------------------------



NC-3, 31 OCT 2024 to 28 NOV 2024

NC-3, 31 OCT 2024 to 28 NOV 2024



CATEGORY	A	B	C	D
CIRCLING	2060-1 522 (600-1)	2100-1 562 (600-1)	NA	