

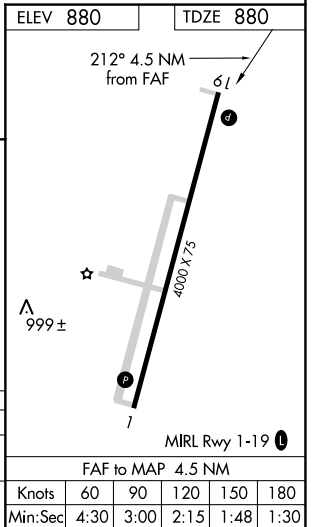
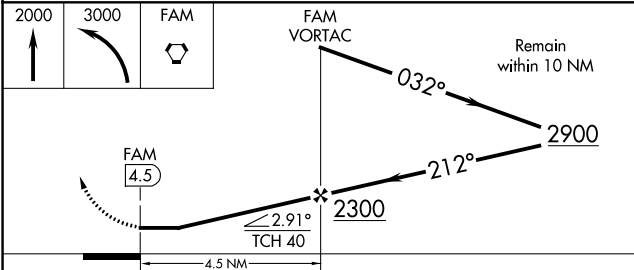
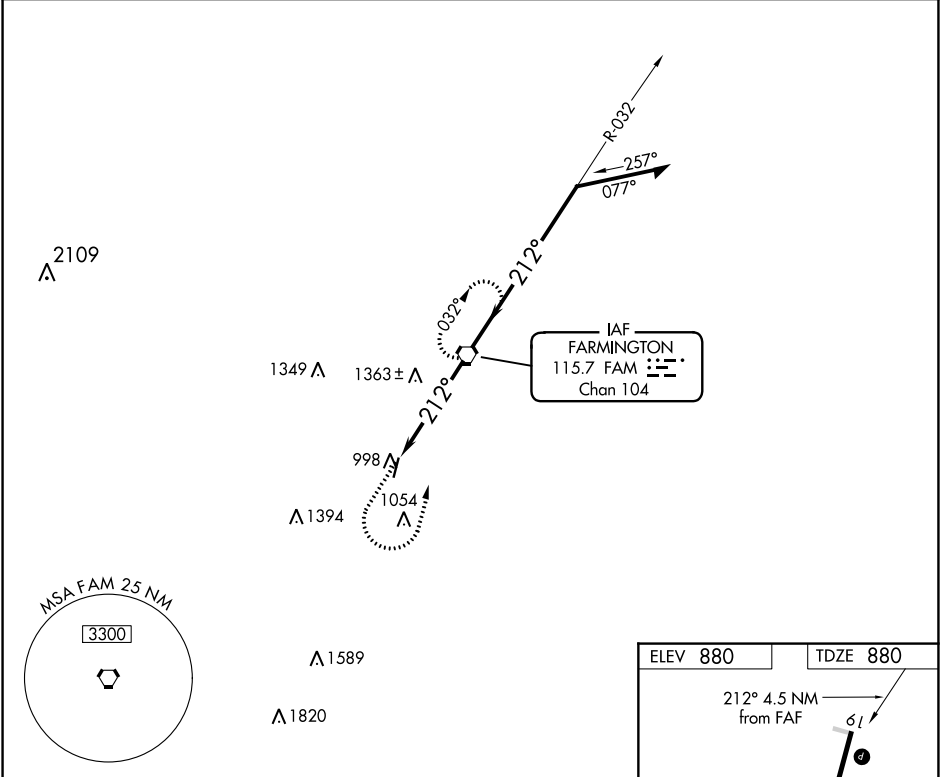
VORTAC FAM <b>115.7</b> Chan <b>104</b>	APP CRS <b>212°</b>	Rwy ldg <b>4000</b> TDZE <b>880</b> Apt Elev <b>880</b>
---	------------------------	---

# VOR RWY 19

A PAUL VANCE FREDERICKTOWN RGNL (H88)

<p><b>V</b> Use Farmington Rgnl altimeter setting. <b>NA</b> Rwy 19 helicopter visibility reduction below ¾ SM NA.</p>	<p>MISSED APPROACH: Climb to 2000 then climbing left turn to 3000 direct FAM VORTAC and hold.</p>
--	---

<p>KANSAS CITY CENTER <b>127.475 346.275</b></p>	<p>UNICOM <b>122.8 (CTAF)</b></p>
--	---------------------------------------



CATEGORY	A	B	C	D
S-19	1660-1 780 (800-1)	1660-1¼ 780 (800-1¼)	NA	
<b>C</b> CIRCLING	1660-1 780 (800-1)	1660-1¼ 780 (800-1¼)	NA	

# VOR RWY 19

NC-3, 31 OCT 2024 to 28 NOV 2024

NC-3, 31 OCT 2024 to 28 NOV 2024