

LOC/DME I-DDV 110.1 Chan 38	APP CRS 052°	Rwy Idg 12103 TDZE 736 Apt Elev 744
---	------------------------	--

ILS or LOC RWY 5R

RICKENBACKER INTL (LCK)

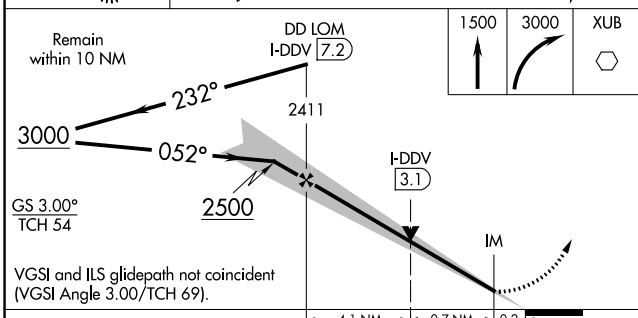
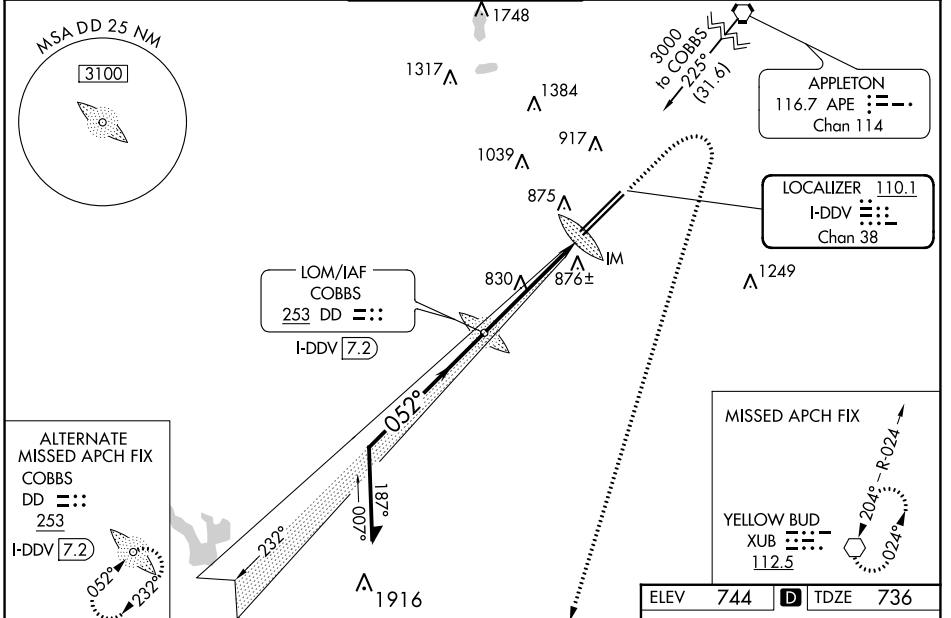
ADF or DME required.

▲ NA
Circling NA northwest of Rwy 5L-23R.

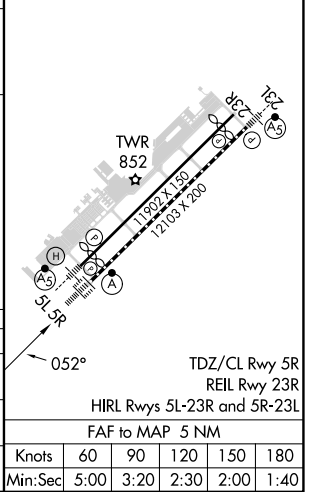
ALSF-2

MISSED APPROACH: Climb to 1500 then climbing right turn to 3000 direct XUB VOR and hold.

ATIS 132.75	COLUMBUS APP CON 134.0 279.6	RICK TOWER 120.05 348.4	GND CON 125.275 275.8	CLNC DEL 125.275 275.8
-----------------------	--	--	---------------------------------	----------------------------------



ELEV 744	D TDZE 736
----------	-------------------



CATEGORY	A	B	C	D
S-ILS 5R	936/18		200 (200-½)	
S-LOC 5R	1080/24	344 (400-½)	1080/30	344 (400-¾)
CIRCLING	1240-1	496 (500-1)	1280-1½ 536 (600-1½)	1400-2 656 (700-2)

Knots	60	90	120	150	180
Min:Sec	5:00	3:20	2:30	2:00	1:40

EC-2, 31 OCT 2024 to 28 NOV 2024

EC-2, 31 OCT 2024 to 28 NOV 2024