

WAAS CH 99444 W32A	APP CRS 336°	Rwy Idg 4299 TDZE 1821 Apt Elev 1821
--	------------------------	---

RNAV (GPS) RWY 32

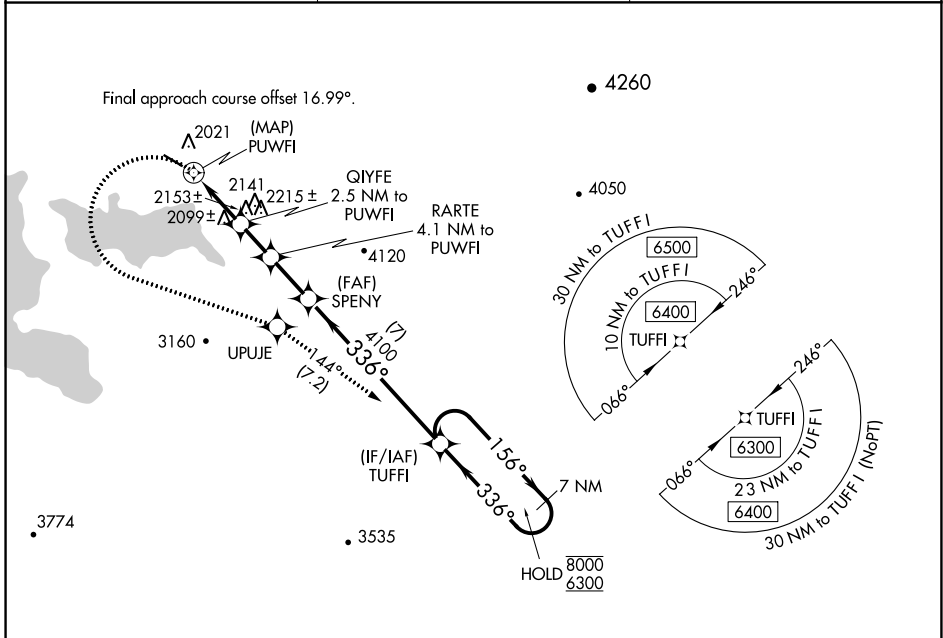
STEPHEN A BEAN MUNI (8B/Ø)

RNP APCH - GPS.

⚠ Circling NA for Cat C northeast of Rwy 14-32. Procedure NA at night. Rwy 32 helicopter visibility reduction below 1 SM NA.
⚠ -30°C

MISSED APPROACH: Climbing left turn to 6300 direct UPUJE and track 144° to TUFFI and hold, continue climb-in-hold to 6300.

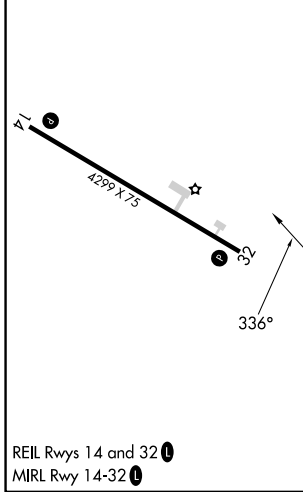
AWOS-3PT 118.0	BOSTON CENTER 124.25 290.5	UNICOM 122.8 (CTAF) Ø
--------------------------	--------------------------------------	---------------------------------



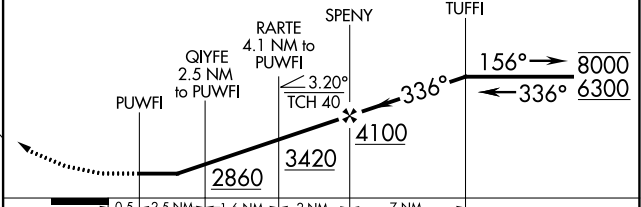
NE-1, 31 OCT 2024 to 28 NOV 2024

NE-1, 31 OCT 2024 to 28 NOV 2024

ELEV 1821	TDZE 1821
-----------	-----------



6300	UPUJE	tr 144°	TUFFI	VGSI and descent angles not coincident (VGSI Angle 3.00/TCH 40).	7 NM Holding Pattern
------	-------	---------	-------	--	----------------------



	0.5	2.5 NM	1.6 NM	2 NM	7 NM	
CATEGORY	A		B		C	D
LP MDA	2560-1		739 (800-1)		2560-2 739 (800-2)	NA
LNAV MDA	2640-1 819 (900-1)	2640-1½ 819 (900-1½)		2640-2½ 819 (900-2½)		NA
C CIRCLING	2640-1½ 819 (900-1½)		2640-2½ 819 (900-2½)		NA	