

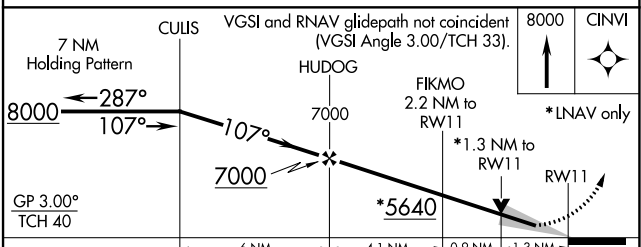
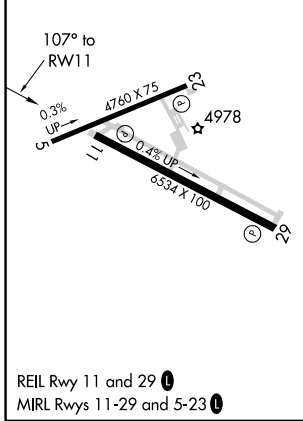
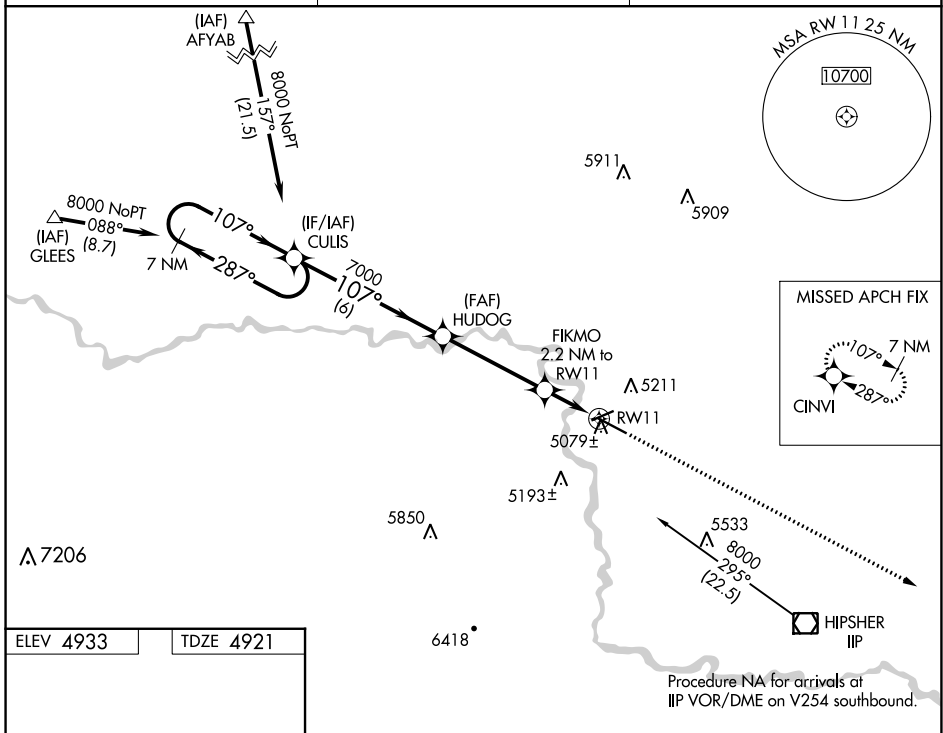
WAAS CH <b>58018</b> <b>W11A</b>	APP CRS <b>107°</b>	Rwy Idg TDZE Apt Elev <b>6534</b> <b>4921</b> <b>4933</b>
--	------------------------	--

# RNAV (GPS) RWY 11

CONVERSE COUNTY (DGW)

RNP APCH.	MISSED APPROACH: Climb to 8000 direct CINVI and hold.
<p>▼ For uncompensated Baro-VNAV systems, LNAV/VNAV NA below -24°C (-11°F) or above 39°C (102°F).</p>	

ASOS <b>135.225</b>	DENVER CENTER <b>135.6 363.025</b>	UNICOM <b>122.8 (CTAF) 0</b>
------------------------	---------------------------------------	---------------------------------



GP 3.00° TCH 40	6 NM	4.1 NM	0.9 NM	1.3 NM
CATEGORY	A	B	C	D
LPV DA	5121-3/4 200 (200-3/4)			
LNAV/VNAV DA	5329-1 1/2 408 (400-1 1/2)			
LNAV MDA	5340-1 419 (500-1)		5340-1 1/4 419 (500-1 1/4)	

NW-1, 31 OCT 2024 to 28 NOV 2024

NW-1, 31 OCT 2024 to 28 NOV 2024