

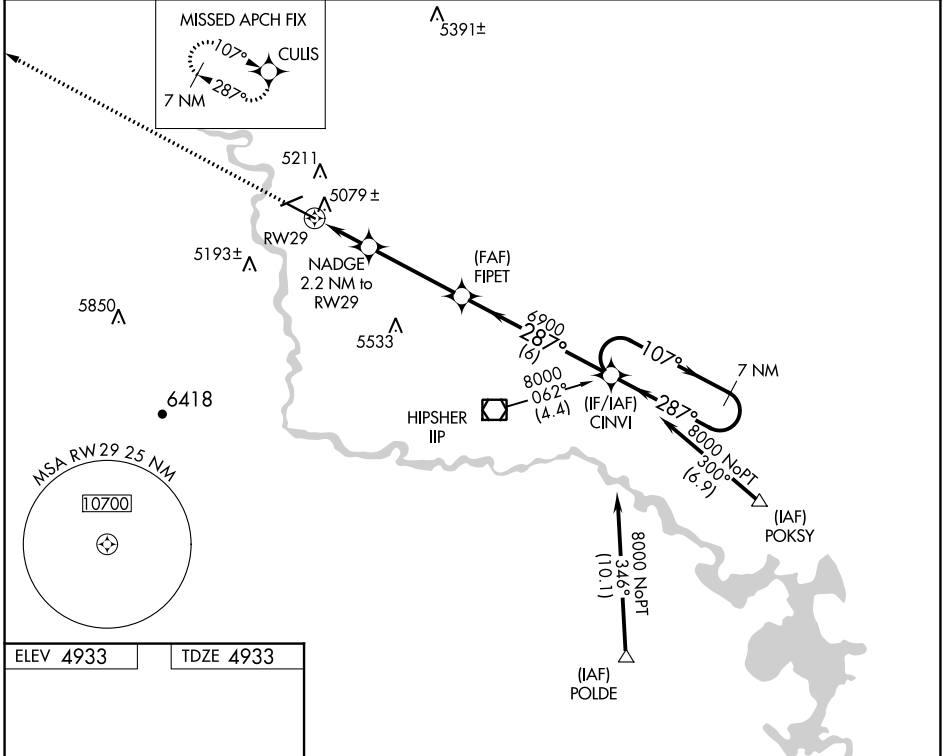
WAAS CH 61018 W29A	APP CRS 287°	Rwy Idg TDZE Apt Elev	6534 4933 4933
--	------------------------	-----------------------------	---

RNAV (GPS) RWY 29

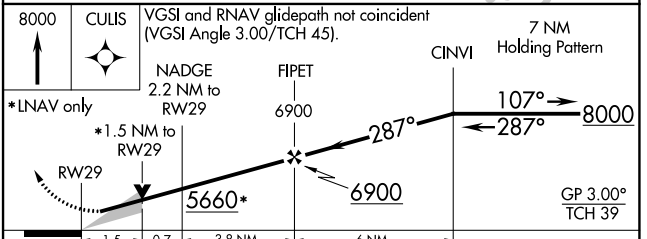
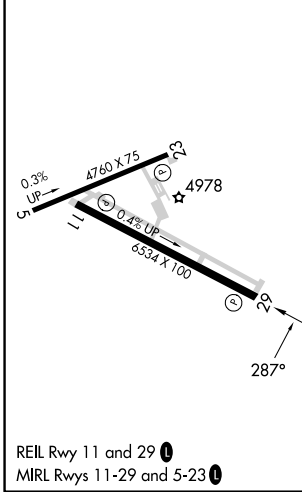
CONVERSE COUNTY (DGW)

RNP APCH-GPS.	MISSED APPROACH: Climb to 8000 direct CULIS and hold.
<p>▼ For uncompensated Baro-VNAV systems, LNAV/VNAV NA below -24°C or above 39°C.</p>	

ASOS 135.225	DENVER CENTER 135.6 363.025	UNICOM 122.8 (CTAF) 0
------------------------	---------------------------------------	---------------------------------



ELEV 4933	TDZE 4933
-----------	-----------



8000	CULIS	VGSI and RNAV glidepath not coincident (VGSI Angle 3.00/TCH 45).		7 NM Holding Pattern
*LNAV only	NADGE 2.2 NM to RWY 29	FIPET 6900	CINVI	8000
	1.5 NM to RWY 29	5660	6900	GP 3.00° TCH 39
CATEGORY	A	B	C	D
LPV DA	5133-3/4		200 (200-3/4)	
LNAV/VNAV DA	5369-1 1/2		436 (500-1 1/2)	
LNAV MDA	5440-1 507 (600-1)		5440-1 1/2 507 (600-1 1/2)	
CIRCLING	5520-1 587 (600-1)		5680-2 1/4 5820-3 747 (800-2 1/4) 887 (900-3)	

NW-1, 31 OCT 2024 to 28 NOV 2024

NW-1, 31 OCT 2024 to 28 NOV 2024