

APP CRS 138°	Rwy Idg TDZE Apt Elev	5000 988 989
------------------------	-----------------------------	---

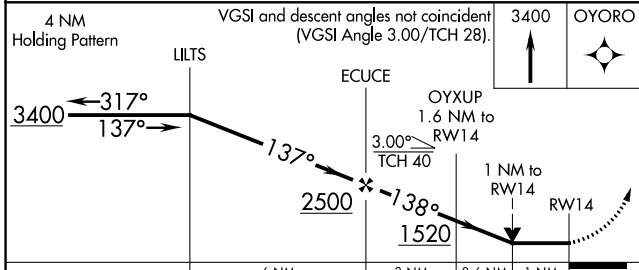
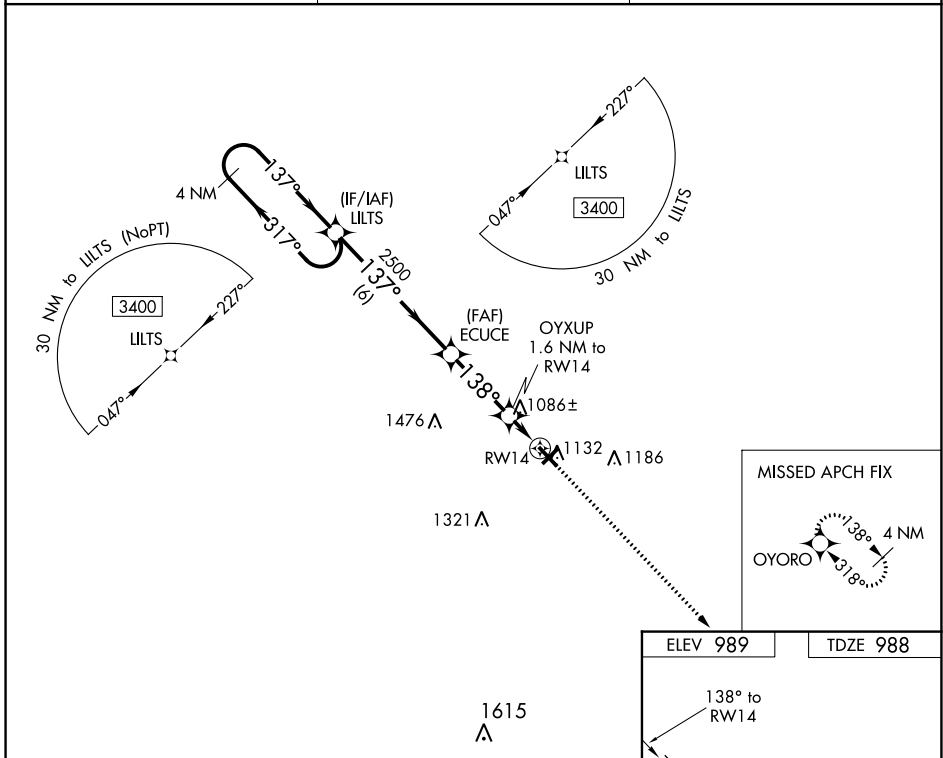
RNAV (GPS) RWY 14

BURNETT COUNTY (RZN)

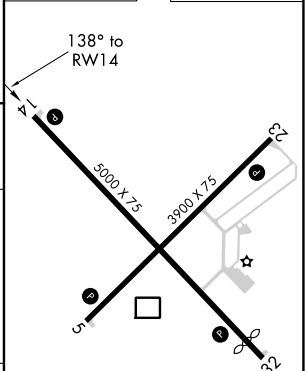
▼ DME/DME RNP-0.3 NA. VDP NA with Rush City, MN altimeter setting.
▲ When local altimeter setting not received, use Rush City, MN altimeter setting and increase all MDA 80 feet; increase LNAV Cat C/D visibility and Circling Cat C/D visibility ¼ mile. Helicopter visibility reduction below ¾ SM NA. Night landing: Rwy 5, 23, 32 NA.

MISSED APPROACH:
Climb to 3400 direct OYORO and hold.

AWOS-3 118.325	MINNEAPOLIS CENTER 121.05 235.775	UNICOM 122.8 (CTAF) 📶
--------------------------	---	--



ELEV 989	TDZE 988
----------	----------



CATEGORY	A	B	C	D
LNAV MDA	1340-1		352 (400-1)	
📶 CIRCLING	1440-1	451 (500-1)	1540-1½ 551 (600-1½)	1680-2¼ 691 (700-2¼)

REIL Rwys 5, 14, 23 and 32 **📶**
 MRL Rwys 5-23 and 14-32 **📶**