

|             |          |             |
|-------------|----------|-------------|
| APP CRS     | Rwy Idg  | <b>3700</b> |
| <b>192°</b> | TDZE     | <b>80</b>   |
|             | Apt Elev | <b>80</b>   |

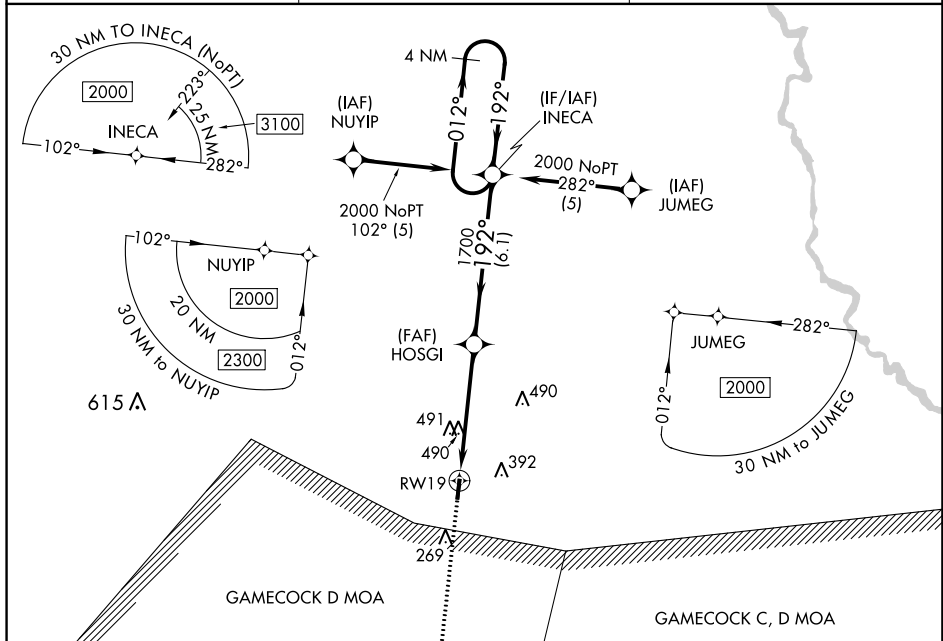
# RNAV (GPS) RWY 19

LAKE CITY MUNI CJ EVANS FLD (51J)

**⚠** Rwy 19 helicopter visibility reduction below 1 SM NA. DME/DME RNP-0.3 NA.  
**⚠** NA Use Kingstree altimeter setting, when not received, use Florence altimeter setting and increase all MDAs 40 feet, increase LNAV Cat B visibility ¼ SM and Cat C visibility ½ SM, increase Circling Cats B/C visibility ¼ SM. Straight-in Rwy 19 NA at night.

**MISSED APPROACH:**  
 Climb to 2000 direct YUBUD and hold.

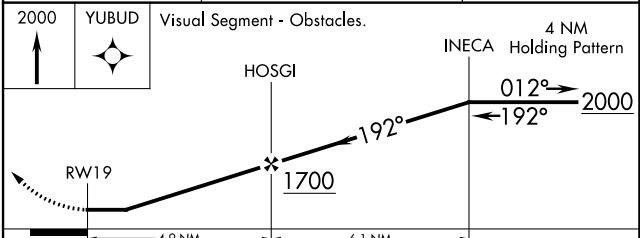
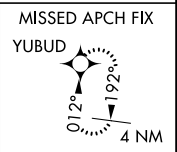
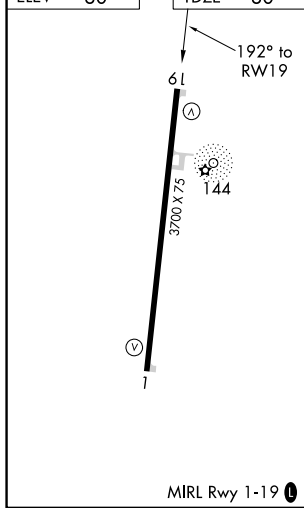
|                              |   |                        |
|------------------------------|---|------------------------|
| CKI AWOS-3<br><b>124.775</b> | FLORENCE APP CON*<br><b>135.25 316.15</b> | CTAF<br><b>122.9 0</b> |
|------------------------------|---|------------------------|



SE-2, 31 OCT 2024 to 28 NOV 2024

SE-2, 31 OCT 2024 to 28 NOV 2024

|      |    |      |    |
|------|----|------|----|
| ELEV | 80 | TDZE | 80 |
|------|----|------|----|



| CATEGORY | A                    | B                    | C                      | D  |
|----------|----------------------|----------------------|------------------------|----|
| LNAV MDA | 820-1                | 740 (800-1)          | 820-2<br>740 (800-2)   | NA |
| CIRCLING | 820-1<br>740 (800-1) | 880-1<br>800 (800-1) | 880-2¼<br>800 (800-2¼) | NA |