

SWABR ONE DEPARTURE (RNAV)  
(SWABR1 .SWABR) 24MAR22

FORT WORTH, TEXAS  
FORT WORTH SPINKS (FWS)  
(SWABR1 .SWABR) 24MAR22

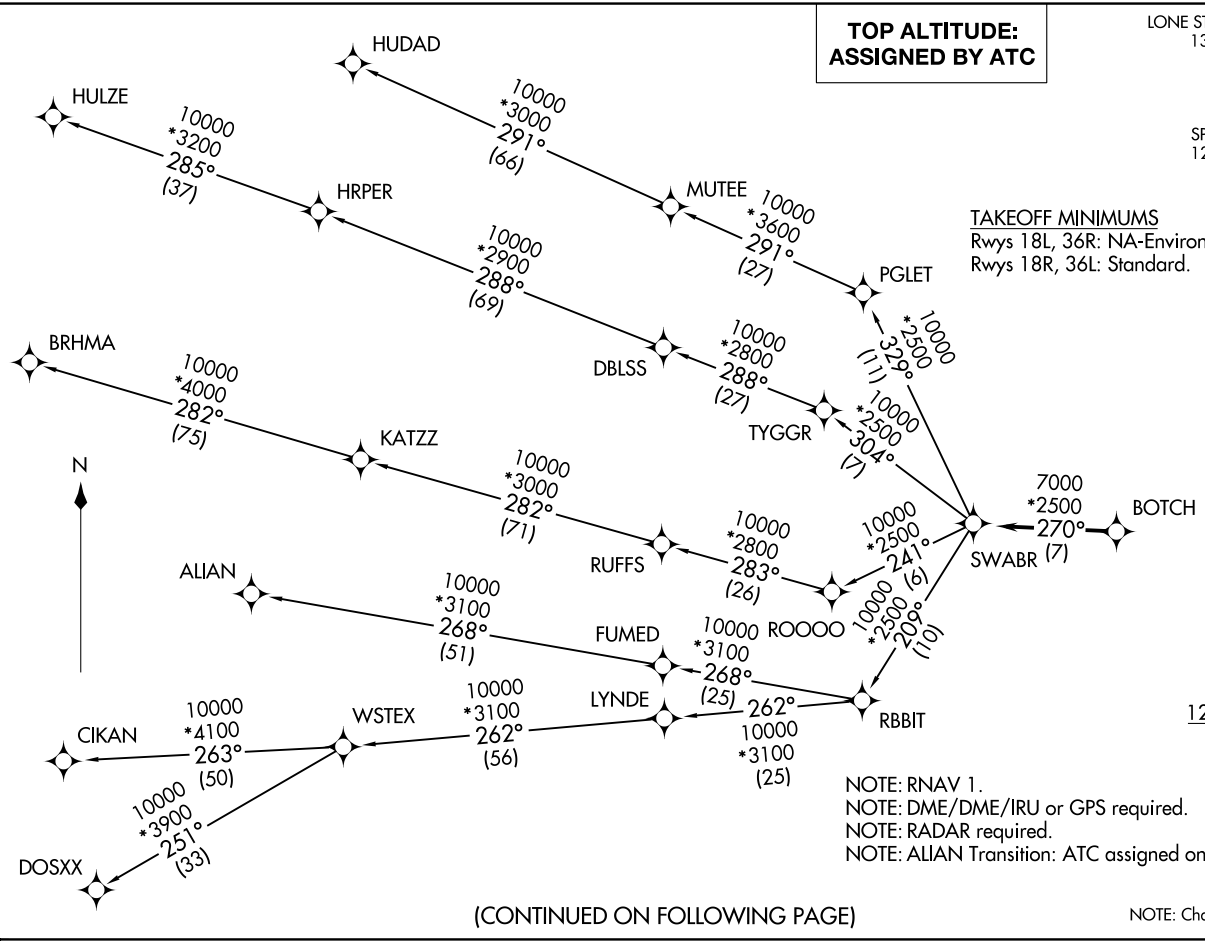
(SWABR1 .SWABR) 24305  
SWABR ONE DEPARTURE (RNAV)

FORT WORTH SPINKS (FWS)  
FORT WORTH, TEXAS

**TOP ALTITUDE:  
ASSIGNED BY ATC**

LONE STAR DEP CON 135.975 379.9  
ATIS 120.025  
GND CON 119.475  
SPINKS TOWER ★ 124.625 (CTAF)

**TAKEOFF MINIMUMS**  
Rwys 18L, 36R: NA-Environmental.  
Rwys 18R, 36L: Standard.



NOTE: RNAV 1.  
NOTE: DME/DME/IRU or GPS required.  
NOTE: RADAR required.  
NOTE: ALIAN Transition: ATC assigned only.

(CONTINUED ON FOLLOWING PAGE)

NOTE: Chart not to scale.

# SWABR ONE DEPARTURE (RNAV)



## DEPARTURE ROUTE DESCRIPTION

TAKEOFF RUNWAY 18R: Climb on heading 177° to 1 200 before turning right.

When entering controlled airspace, fly heading assigned by ATC, expect vectors to BOTCH, then on track 270° to SWABR, then on assigned transition. Maintain ATC assigned altitude, expect filed altitude 10 minutes after departure.

ALIAN TRANSITION (SWABR1.ALIAN)

BRHMA TRANSITION (SWABR1.BRHMA)

CIKAN TRANSITION (SWABR1.CIKAN)

DOSXX TRANSITION (SWABR1.DOSXX)

HUDAD TRANSITION (SWABR1.HUDAD)

HULZE TRANSITION (SWABR1.HULZE)

WSTEX TRANSITION (SWABR1.WSTEX)

SC-2, 31 OCT 2024 to 28 NOV 2024

SC-2, 31 OCT 2024 to 28 NOV 2024