

APP CRS	Rwy Idg	3000
108°	TDZE	840
	Apt Elev	840

RNAV (GPS) RWY 11

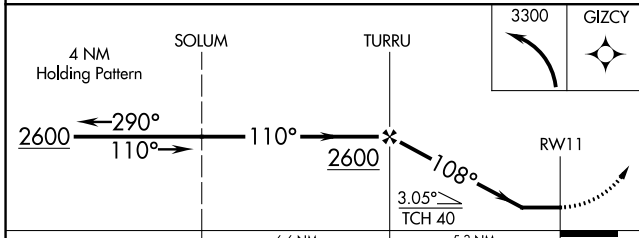
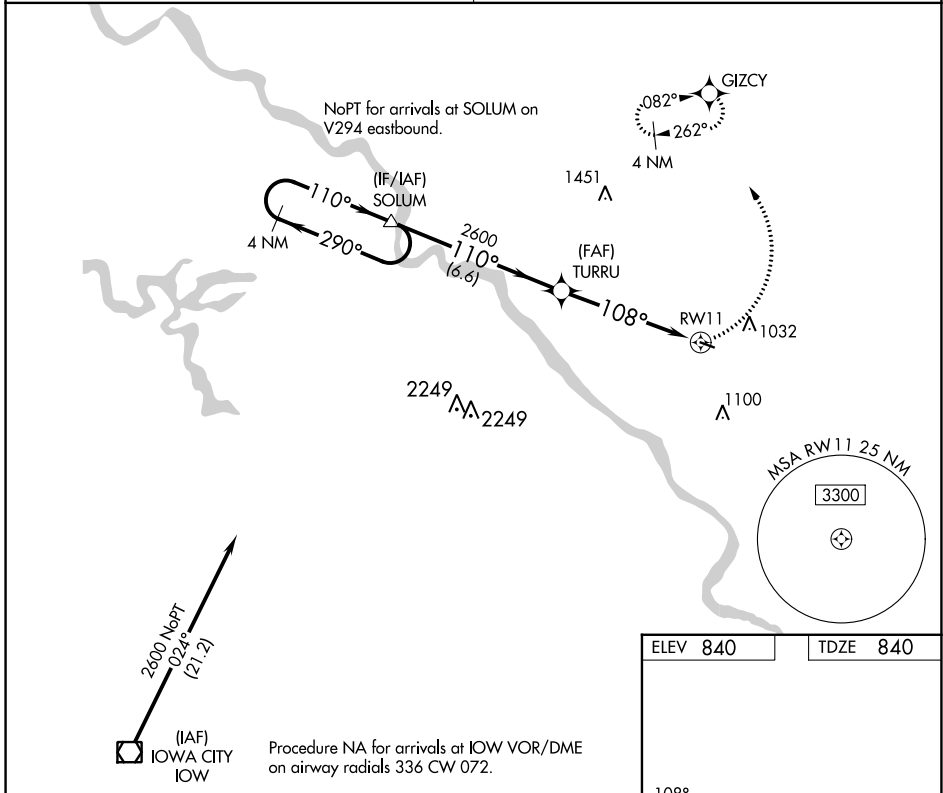
MATHEWS MEML (8C4)

NA DME/DME RNP-0.3 NA. Visibility reduction by helicopters NA. Use Iowa City altimeter setting, when not received use Cedar Rapids altimeter setting.

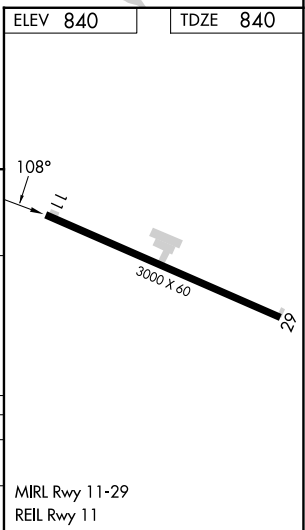
MISSED APPROACH: Climbing left turn to 3300 direct GIZCY and hold.

CEDAR RAPIDS APP CON ★
119.7 266.8

CTAF
122.9



CATEGORY	A	B	C	D
LNAV MDA	1360-1	520 (600-1)		NA
CIRCLING	1460-1	620 (700-1)		NA



NC-3, 31 OCT 2024 to 28 NOV 2024

NC-3, 31 OCT 2024 to 28 NOV 2024