

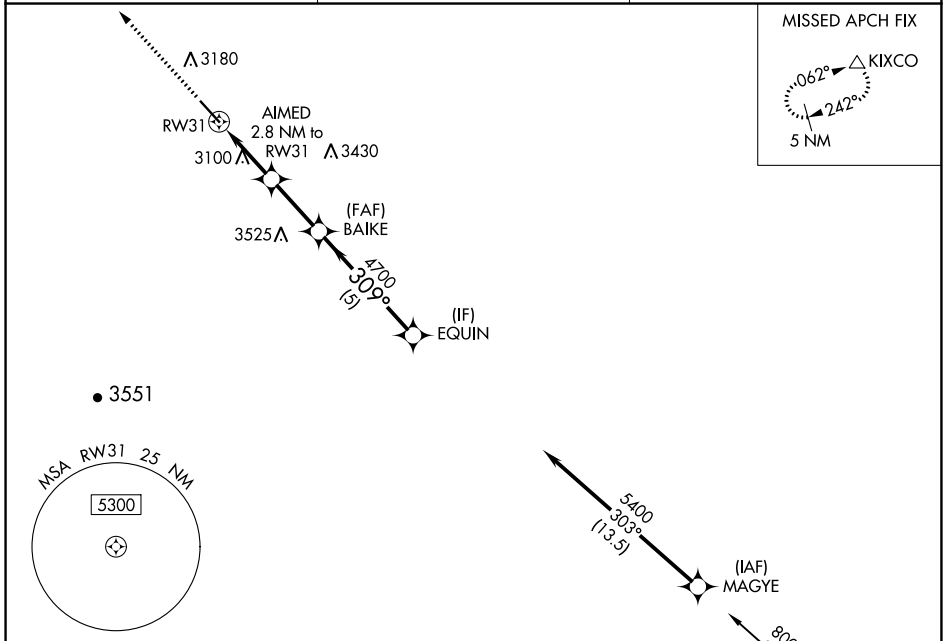
WAAS CH <b>50138</b> <b>W31A</b>	APP CRS <b>309°</b>	Rwy Idg TDZE Apt Elev	<b>5904</b> <b>2981</b> <b>2981</b>
--	------------------------	-----------------------------	---

# RNAV (GPS) RWY 31

BAKER MUNI (BHK)

RNP APCH.	MISSED APPROACH: Climb to 3500 then climbing right turn 6000 direct KIXCO and hold.
For uncompensated Baro-VNAV systems, LNAV/VNAV NA below -27°C or above 54°C. When local altimeter setting not received, procedure NA.	

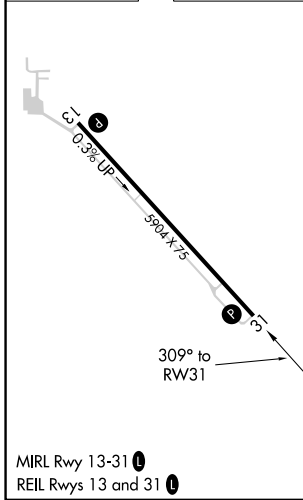
ASOS <b>135.475</b>	SALT LAKE CENTER <b>126.85 305.2</b>	CTAF <b>122.9</b>
------------------------	---	----------------------



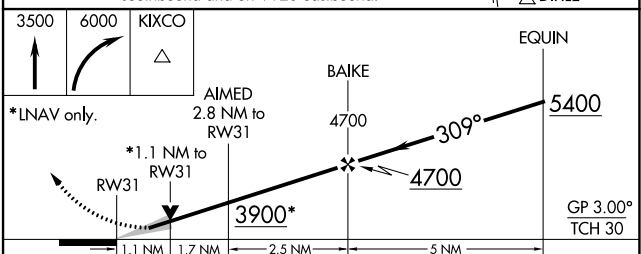
NW-1, 31 OCT 2024 to 28 NOV 2024

NW-1, 31 OCT 2024 to 28 NOV 2024

ELEV 2981	TDZE 2981
-----------	-----------



Procedure NA for arrivals at DIXLE on V491 southbound and on V120 eastbound.



CATEGORY	A	B	C	D
LPV DA		3231- <sup>7</sup> / <sub>8</sub>	250 (300- <sup>7</sup> / <sub>8</sub> )	
LNAV/VNAV DA		3267-1	286 (300-1)	
LNAV MDA		3360-1	379 (400-1)	
CIRCLING	3540-1	559 (600-1)	3620-1 <sup>3</sup> / <sub>4</sub> 639 (700-1 <sup>3</sup> / <sub>4</sub> )	3820-2 <sup>3</sup> / <sub>4</sub> 839 (900-2 <sup>3</sup> / <sub>4</sub> )