

(STACO2.STACO) 24305

STACO TWO DEPARTURE (RNAV)

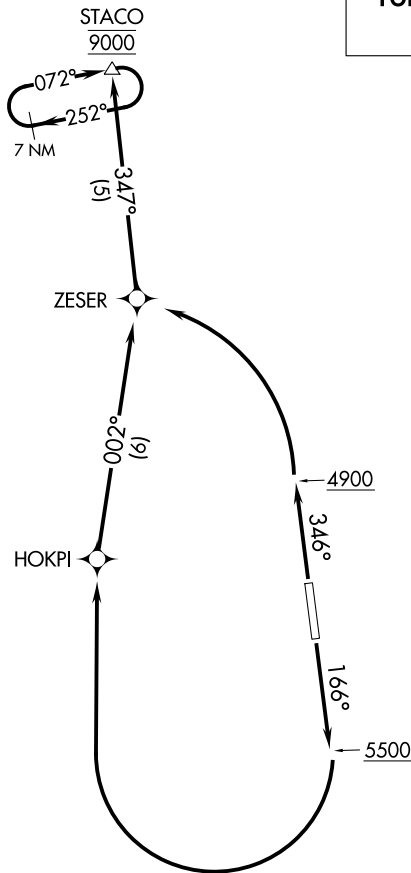
AL-6944 (FAA)

BOLINDER FLD/TOOELE VALLEY (TVY)

TOOELE, UTAH

SALT LAKE CITY DEP CON
135.5 316.15
SLC ASOS
125.625
AWOS-3
119.725
CTAF
123.0

**TOP ALTITUDE:
9000**



NOTE: RNAV 1.
NOTE: GPS required.

TAKEOFF MINIMUMS

Rwy 17: Standard with minimum climb of 350' per NM to 8200.

Rwy 35: Standard with minimum climb of 380' per NM to 9000.

NOTE: Chart not to scale.

DEPARTURE ROUTE DESCRIPTION

TAKEOFF RUNWAY 17: Climb heading 166° to 5500, then climbing right turn direct HOKPI, then on depicted route to STACO, thence. . . .

TAKEOFF RUNWAY 35: Climb heading 346° to 4900, then climbing left turn direct ZESER, then on depicted route to STACO, thence. . . .

. . . . Maintain 9000 and hold at STACO.

STACO TWO DEPARTURE (RNAV)

(STACO2.STACO) 25JUN15

TOOELE, UTAH
BOLINDER FLD/TOOELE VALLEY (TVY)

SW-4, 31 OCT 2024 to 28 NOV 2024

SW-4, 31 OCT 2024 to 28 NOV 2024