

APP CRS	Rwy Idg	<b>2420</b>
<b>190°</b>	TDZE	<b>168</b>
	Apt Elev	<b>168</b>

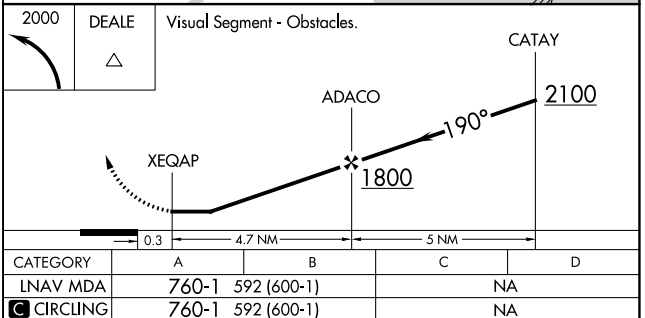
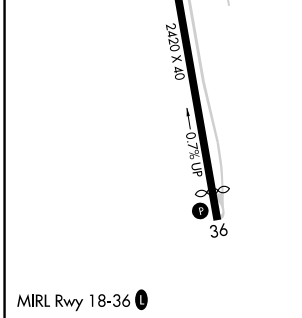
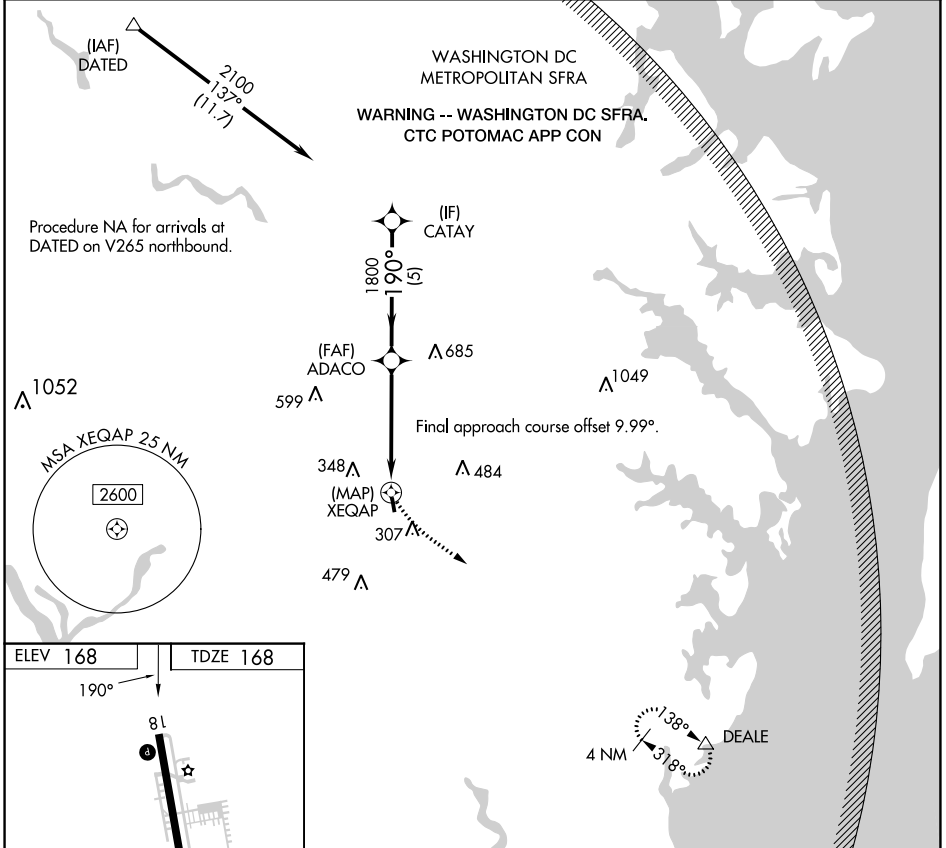
# RNAV (GPS) RWY 18

FREEWAY (W00)

**⚠** Rwy 18 helicopter visibility reduction below 1 SM NA. DME/DME RNP-0.3 NA.  
**⚠** NA Procedure NA at night. Use Fort Meade (Odenton) altimeter setting; when not received, use College Park altimeter setting and increase all MDA 20 feet.

MISSED APPROACH: Climbing left turn to 2000 direct DEALE and hold.

FME AWOS-3 <b>123.925</b>	POTOMAC APP CON <b>128.0 335.5</b>	UNICOM <b>123.075 (CTAF) 0</b>
------------------------------	---------------------------------------	-----------------------------------



NE-3, 31 OCT 2024 to 28 NOV 2024

NE-3, 31 OCT 2024 to 28 NOV 2024