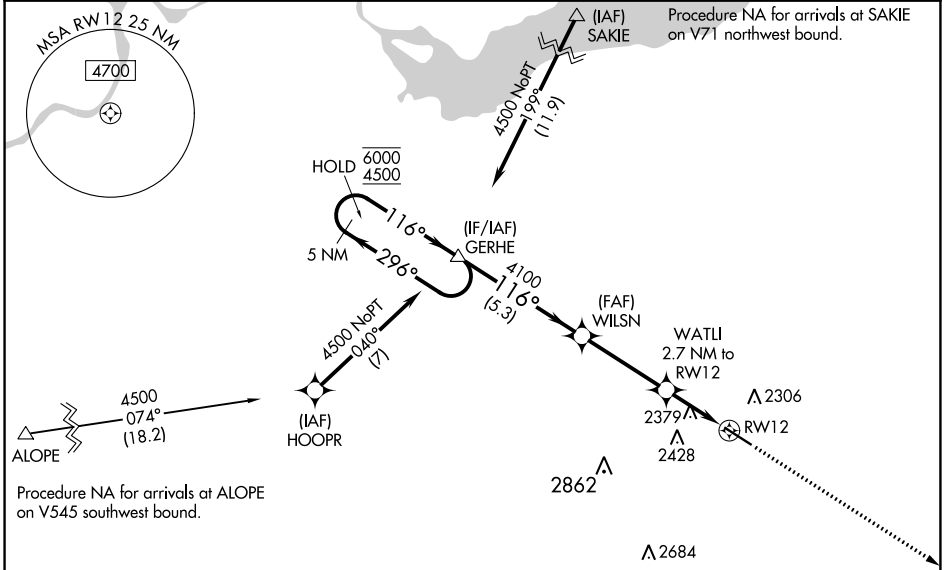


WAAS CH <b>70717</b> <b>W12A</b>	APP CRS <b>116°</b>	Rwy Idg TDZE Apt Elev	<b>5500</b> <b>2114</b> <b>2135</b>
--	------------------------	-----------------------------	---

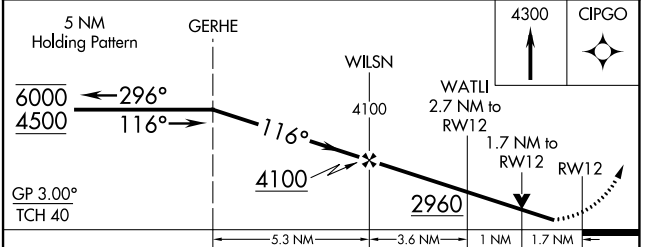
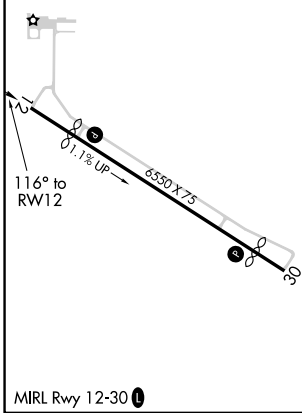
# RNAV (GPS) RWY 12

WATFORD CITY MUNI (S25)

RNP APCH-GPS.		MISSED APPROACH: Climb to 4300 direct CIPGO and hold.
<p><b>NA</b> Rwy 12 helicopter visibility reduction below 3/4 SM NA. When local altimeter setting not received, use Williston altimeter setting and increase LPV DA to 2474 feet; increase all MDAs 120 feet and LNAV visibility Cat C/D 3/8 SM, and Circling visibility Cat C/D 1/2 SM.</p>		
AWOS-3PT <b>118.125</b>	SALT LAKE CENTER <b>126.85 305.2</b>	UNICOM <b>122.8 (CTAF)</b>



ELEV 2135	<b>D</b>	TDZE 2114
-----------	----------	-----------



CATEGORY	A	B	C	D
LPV DA	2364-1		250 (300-1)	
LNAV MDA	2640-1	526 (600-1)	2640-1½	526 (600-1½)
<b>C</b> CIRCLING	2700-1 565 (600-1)	2760-1 625 (700-1)	2760-1¾ 625 (700-1¾)	2960-2¾ 825 (900-2¾)

NC-1, 31 OCT 2024 to 28 NOV 2024

NC-1, 31 OCT 2024 to 28 NOV 2024