

APP CRS **130°**
 Rwy Idg **3900**
 TDZE **408**
 Apt Elev **412**

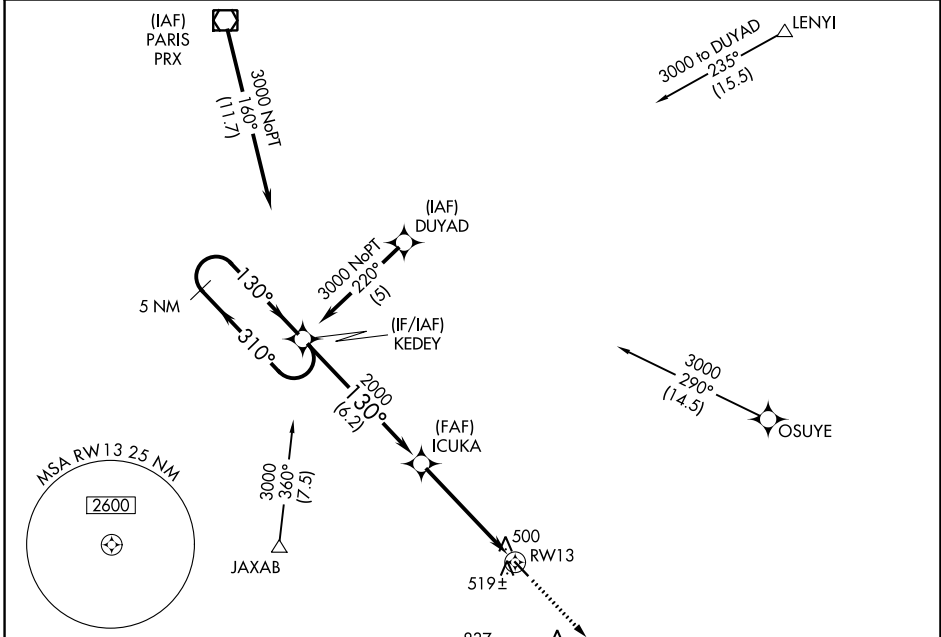
RNAV (GPS) RWY 13

FRANKLIN COUNTY (F53)

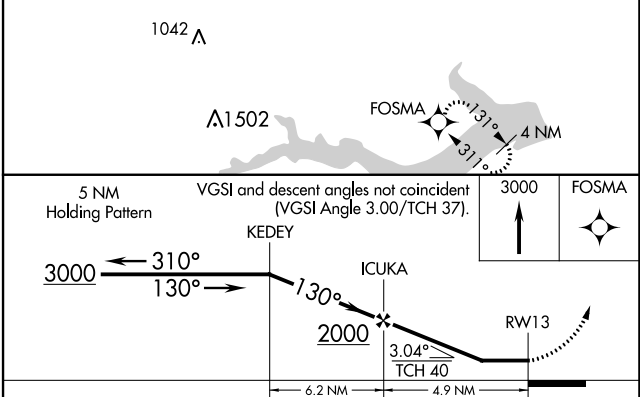
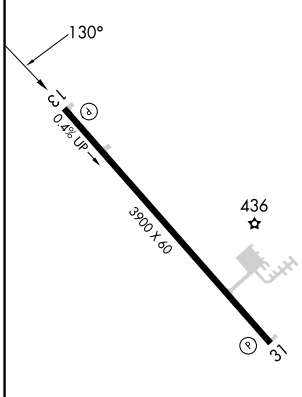
NA DME/DME RNP-0.3 NA. Use Mount Pleasant Rgnl altimeter setting; if not received, procedure NA. Procedure NA at night. Helicopter visibility reduction below 1 SM NA.

MISSED APPROACH: Climb to 3000 direct FOSMA and hold.

OSA AWOS-3 **119.775** FORT WORTH CENTER **132.025 360.75** UNICOM **123.0** (CTAF)



ELEV **412** TDZE **408**



CATEGORY	A	B	C	D
LNAV MDA	820-1	412 (500-1)		NA
CIRCLING	940-1 528 (600-1)	980-1 568 (600-1)		NA

SC-2, 31 OCT 2024 to 28 NOV 2024

SC-2, 31 OCT 2024 to 28 NOV 2024