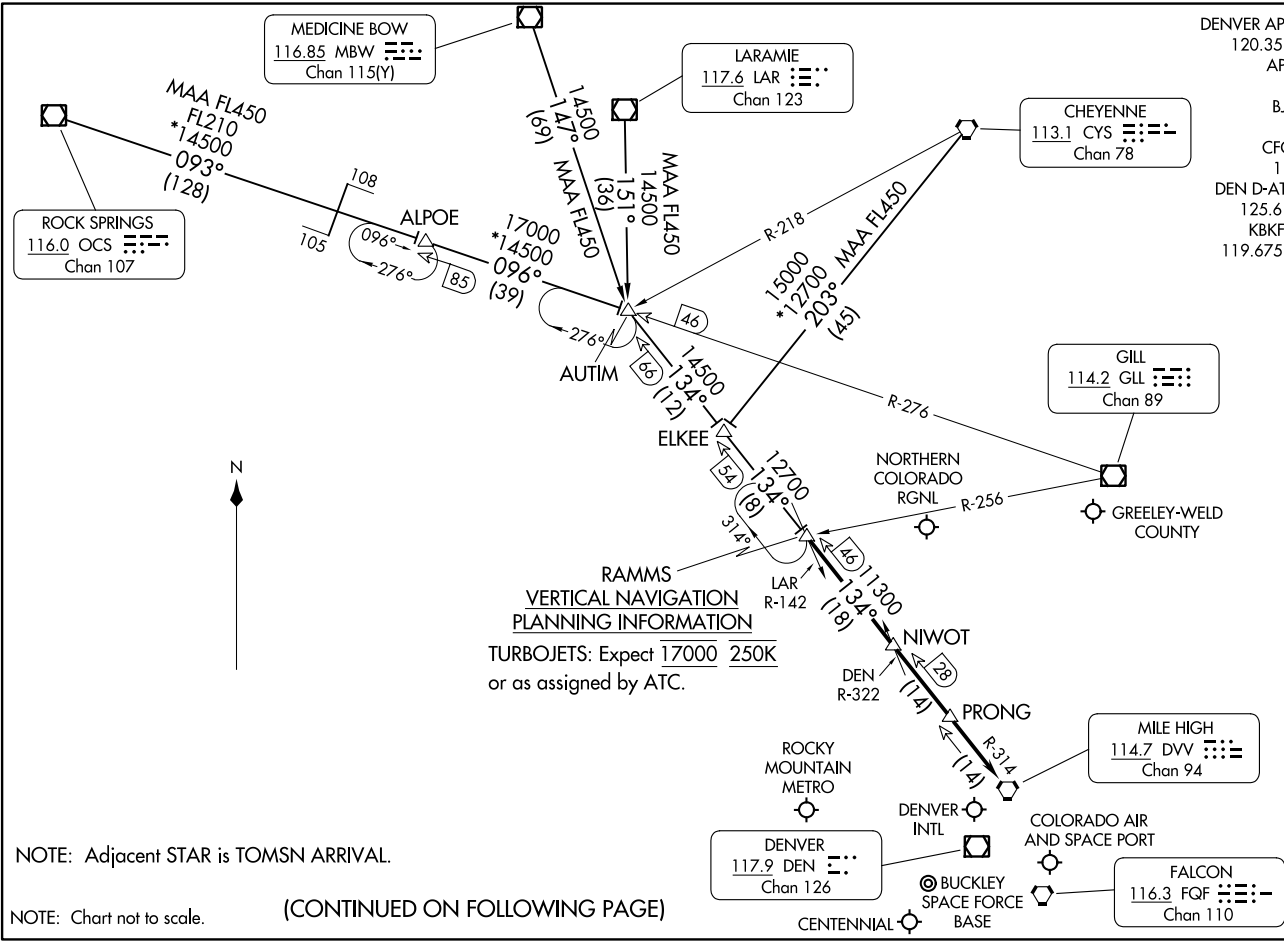


DENVER APP CON  
120.35 379.3  
APA ATIS  
120.3  
BJC ATIS  
126.25  
CFO ATIS  
119.025  
DEN D-ATIS ARR  
125.6 379.9  
KBKF ATIS\*  
119.675 259.3



(CONTINUED ON FOLLOWING PAGE)

NOTE: Adjacent STAR is TOMSN ARRIVAL.

NOTE: Chart not to scale.

ARRIVAL ROUTE DESCRIPTION

CHEYENNE TRANSITION (CYS.RAMMS8): From over CYS VORTAC on CYS R-203 and DVV R-314 to RAMMS. Thence. . . .

LARAMIE TRANSITION (LAR.RAMMS8): From over LAR VOR/DME on LAR R-151 and DVV R-314 to RAMMS. Thence. . . .

MEDICINE BOW TRANSITION (MBW.RAMMS8): From over MBW VOR/DME on MBW R-147 and DVV R-314 to RAMMS. Thence. . . .

ROCK SPRINGS TRANSITION (OCS.RAMMS8): From over OCS VOR/DME on OCS R-093 and GLL R-276 to ALPOE then on GLL R-276 and DVV R-314 to RAMMS. Thence. . . .

. . . .from over RAMMS on DVV R-314 to DVV VORTAC. Expect RADAR vectors to the final approach course at or before DVV VORTAC.

SW-1, 31 OCT 2024 to 28 NOV 2024

SW-1, 31 OCT 2024 to 28 NOV 2024