

WAAS CH <b>50308</b> <b>W24A</b>	APP CRS <b>241°</b>	Rwy Idg TDZE Apt Elev	<b>5000</b> <b>666</b> <b>666</b>
--	------------------------	-----------------------------	---

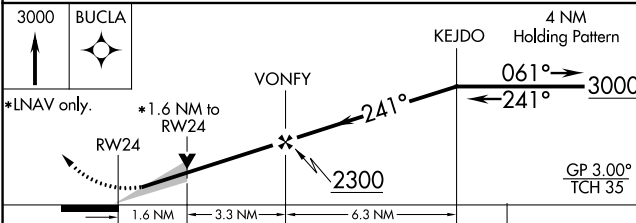
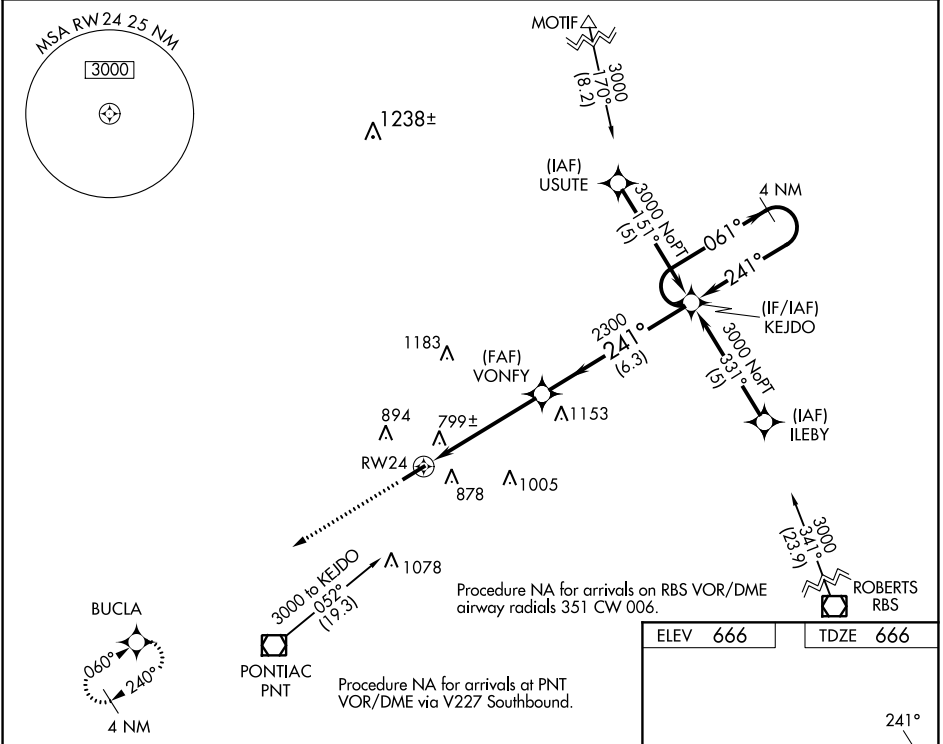
# RNAV (GPS) RWY 24

PONTIAC MUNI (PNT)

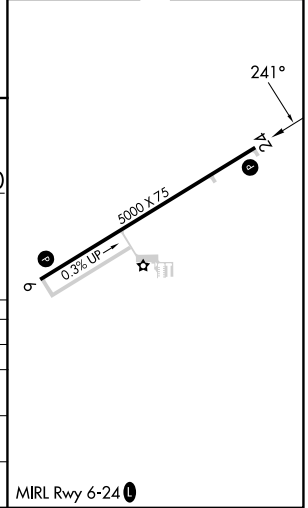
**⚠** DME/DME RNP-0.3 NA. For uncompensated Baro-VNAV systems, LNAV/VNAV NA below -16°C (4°F) or above 54°C (130°F). When local altimeter setting not received, use Bloomington/Normal altimeter setting: increase LPV DA to 1014 feet and all visibilities ¼ SM; increase LNAV/VNAV DA to 1237 feet and all visibilities ¼ SM; increase all MDAs 100 feet and visibility LNAV Cat C ½ SM, Circling Cat C ½ SM. Baro-VNAV and VDP NA when using Bloomington/Normal altimeter setting.

**MISSED APPROACH:**  
Climb to 3000 direct BUCLA and hold.

AWOS-3 <b>119.675</b>	CHICAGO CENTER <b>123.75 259.1</b>	UNICOM <b>123.075 (CTAF) 0</b>
--------------------------	---------------------------------------	-----------------------------------



ELEV <b>666</b>	TDZE <b>666</b>
-----------------	-----------------



CATEGORY	A	B	C	D
LPV DA	916-1		250 (300-1)	NA
LNAV/VNAV DA	1139-1¾		473 (500-1¾)	NA
LNAV MDA	1220-1	554 (600-1)	1220-1½ 554 (600-1½)	NA
CIRCLING	1220-1	554 (600-1)	1320-1¾ 654 (700-1¾)	NA

MIRL Rwy 6-24 0

EC-3, 31 OCT 2024 to 28 NOV 2024

EC-3, 31 OCT 2024 to 28 NOV 2024