

APP CRS	Rwy Idg	<b>4299</b>
<b>275°</b>	TDZE	<b>669</b>
	Apt Elev	<b>670</b>

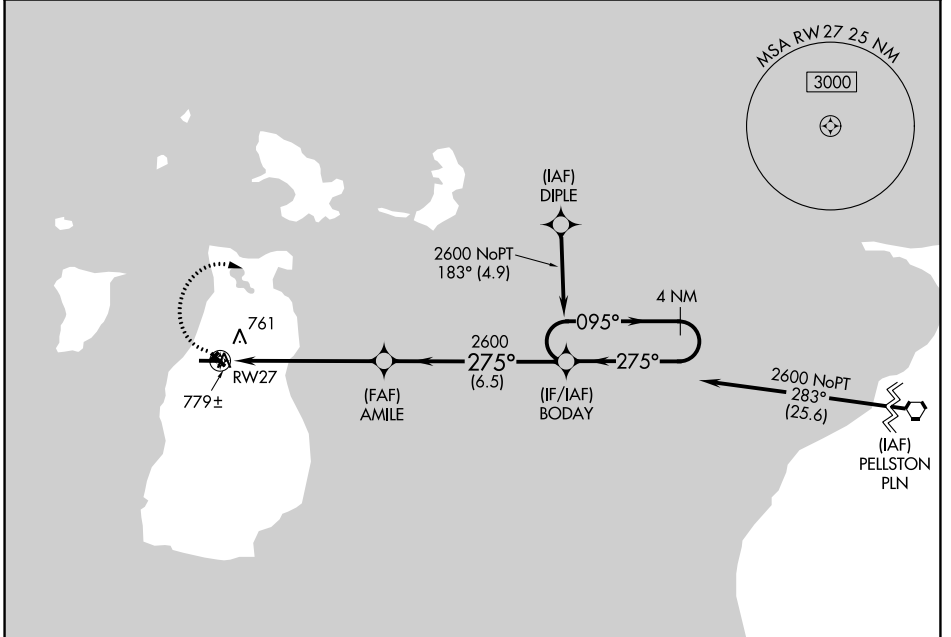
# RNAV (GPS) RWY 27

BEAVER ISLAND (SJJ)

**⚠** DME/DME RNP -0.3 NA. When local altimeter setting not received, use Pellston altimeter setting and increase all MDA 100 feet. Circling NA to Rwys 5, 14, 23, 32.

**⚠** MISSED APPROACH: Climbing right turn to 2600 direct BODAY and hold.

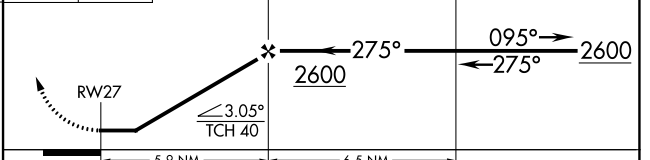
AWOS-3 <b>118.075</b>	MINNEAPOLIS CENTER <b>134.6 354.05</b>	UNICOM <b>122.8 (CTAF)</b> <b>📻</b>
--------------------------	---	--



ELEV 670	TDZE 669
----------	----------



**2600 BODAY** VGSI and descent angles not coincident (VGSI Angle 4.00/TCH 40). **4 NM Holding Pattern**



CATEGORY	A	B	C	D
LNAV MDA	1080-1	411 (500-1)		NA
CIRCLING	1100-1 430 (500-1)	1120-1 450 (500-1)		NA

MIRL Rwy 9-27 **📻**  
REIL Rwys 9 and 27 **📻**

EC-1, 31 OCT 2024 to 28 NOV 2024

EC-1, 31 OCT 2024 to 28 NOV 2024