

APP CRS	Rwy Idg	4404
172°	TDZE	3454
	Apt Elev	3454

RNAV (GPS) RWY 17

PANHANDLE-CARSON COUNTY (T45)

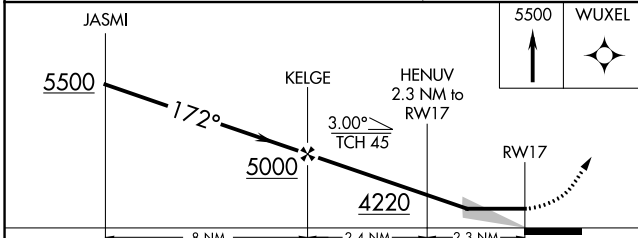
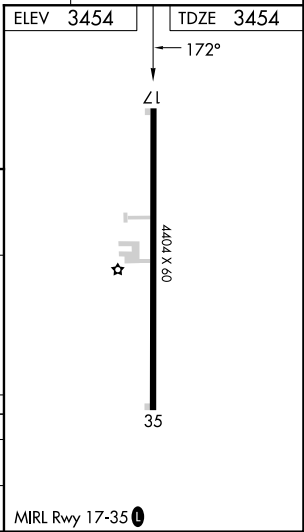
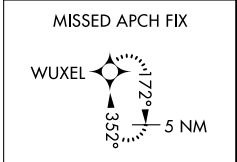
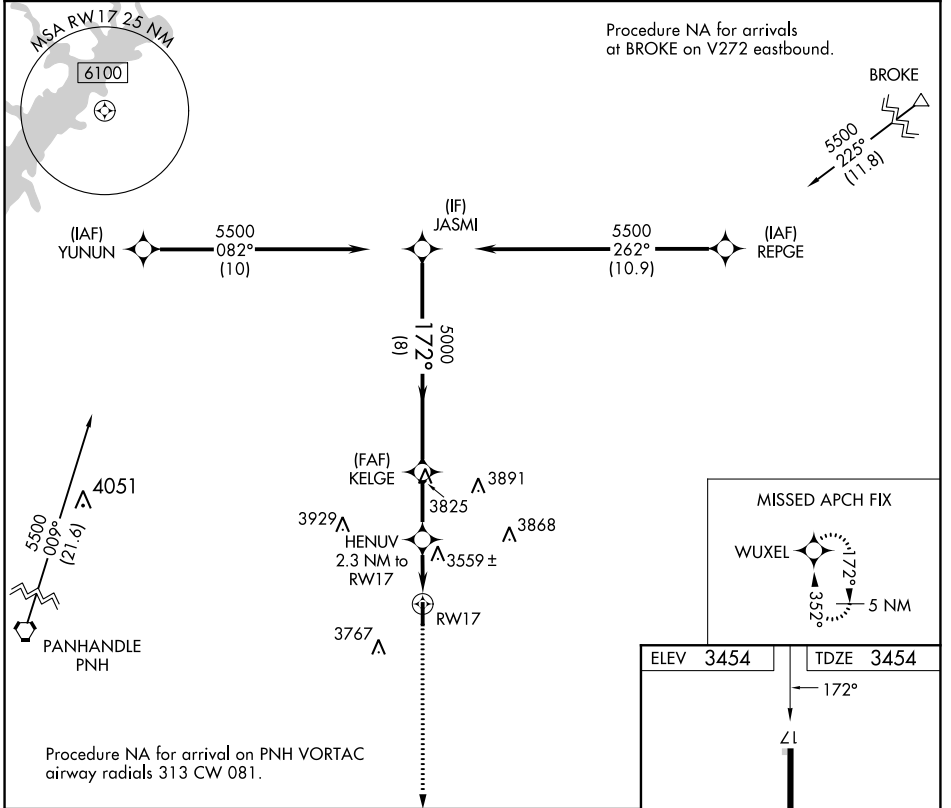
RNP APCH - GPS.

▼ Use Rick Husband Amarillo Intl altimeter setting; when not received, use Borger altimeter setting and increase all MDA 40 feet.

▲ NA

MISSED APPROACH: Climb to 5500 direct WUXEL and hold.

AMA ASOS 118.85 350.3	AMARILLO APP CON* 119.5 307.0	UNICOM 122.7 (CTAF)	123.5 0
---------------------------------	---	-------------------------------	----------------



CATEGORY	A	B	C	D
LNAV MDA	3900-1	446 (500-1)	3900-1 $\frac{1}{8}$ 446 (500-1 $\frac{1}{8}$)	NA
C CIRCLING	4140-1	686 (700-1)	4140-2 686 (700-2)	NA

MIRL Rwy 17-35 **0**

SC-2, 31 OCT 2024 to 28 NOV 2024

SC-2, 31 OCT 2024 to 28 NOV 2024