

APP CRS	Rwy Idg	4404
352°	TDZE	3454
	Apt Elev	3454

RNAV (GPS) RWY 35

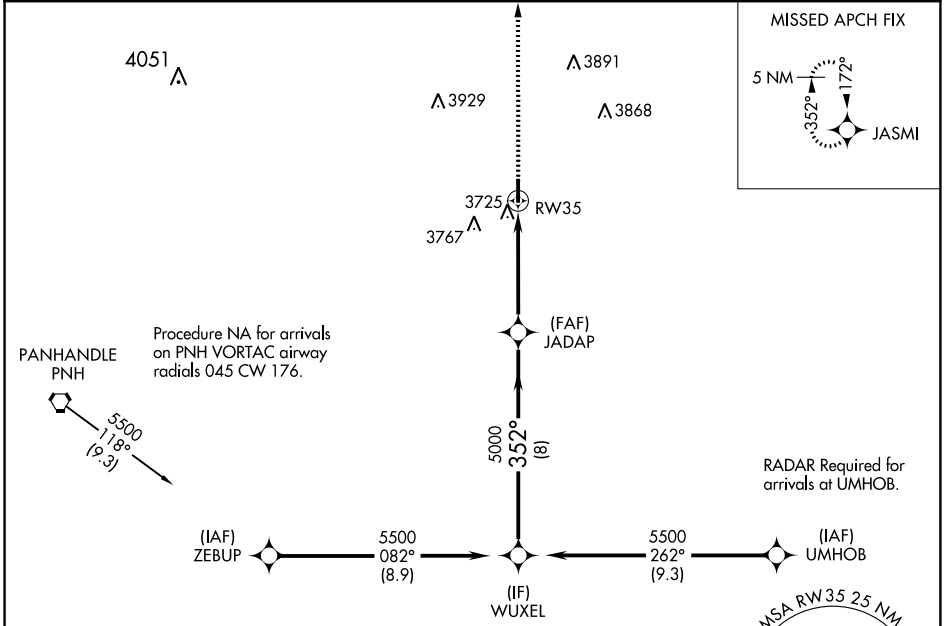
PANHANDLE-CARSON COUNTY (T45)

RNP APCH - GPS.

⚠ Use Rick Husband Amarillo Intl altimeter setting; when not received, use Hutchinson County altimeter setting and increase all MDA 40 feet; increase LNAV Cat C visibility to 2. Rwy 35 helicopter visibility reduction below ¾ SM NA.

MISSED APPROACH: Climb to 5500 direct JASMI and hold.

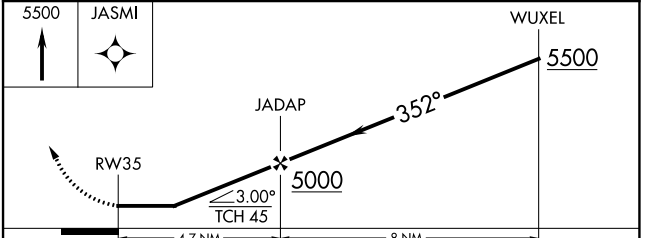
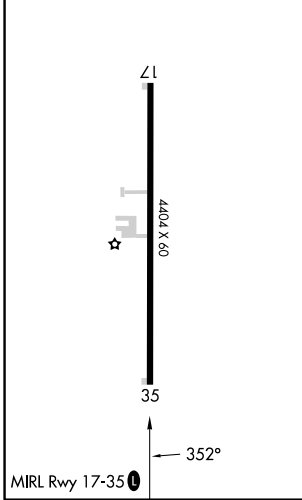
AMA ASOS 118.85 350.3	AMARILLO APP CON ★ 119.5 307.0	UNICOM 122.7 (CTAF)	123.5
---------------------------------	--	-------------------------------	--------------



Procedure NA for arrivals on PNH VORTAC airway radials 045 CW 176.

RADAR Required for arrivals at UMHOB.

ELEV	3454	TDZE	3454
------	-------------	------	-------------



CATEGORY	A	B	C	D
LNAV MDA	4100-1	646 (700-1)	4100-1 7/8 646 (700-1 7/8)	NA
CIRCLING	4140-1	686 (700-1)	4140-2 686 (700-2)	NA

SC-2, 31 OCT 2024 to 28 NOV 2024

SC-2, 31 OCT 2024 to 28 NOV 2024