

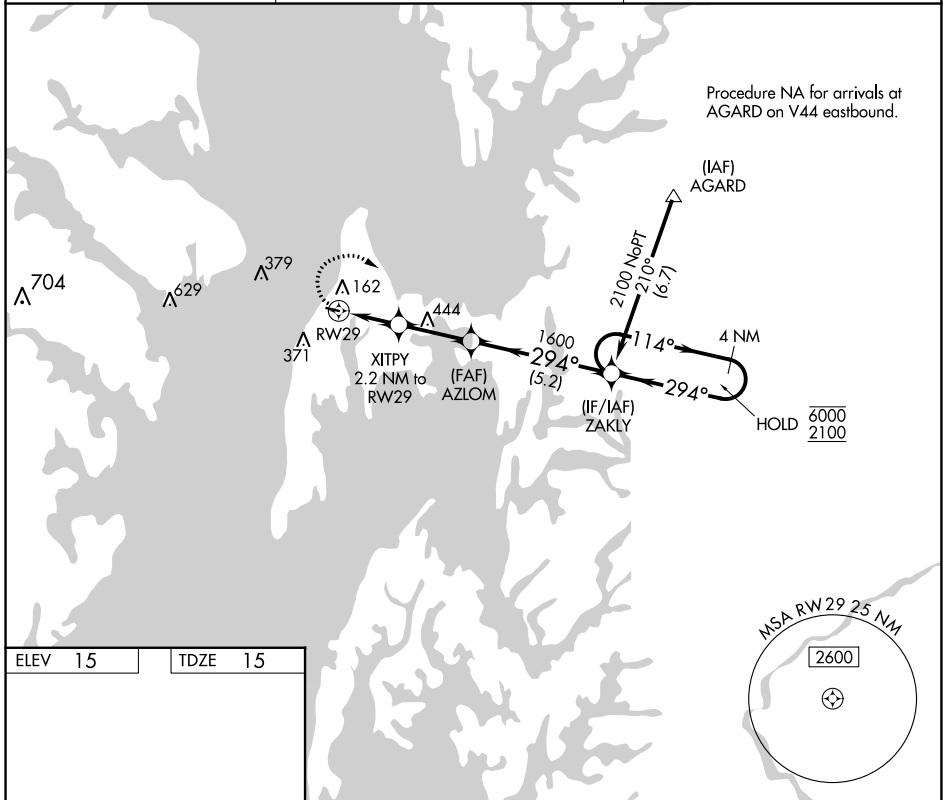
APP CRS	Rwy ldg	2714
294°	TDZE	15
	Apt Elev	15

RNAV (GPS) RWY 29

BAY BRIDGE (W29)

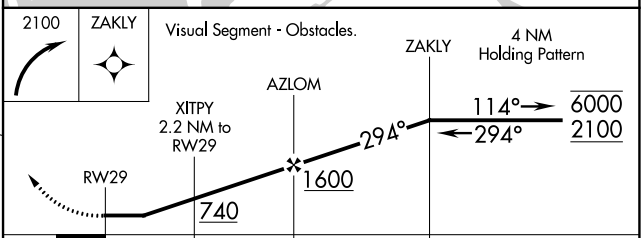
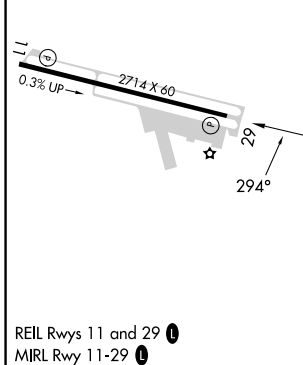
RNP APCH.	MISSED APPROACH: Climbing right turn to 2100 direct ZAKLY and hold.
<p>▼ Rwy 29 helicopter visibility reduction below 1 SM NA.</p> <p>▲</p>	

AWOS-3 120.575	POTOMAC APP CON 119.0 282.275	UNICOM 122.725 (CTAF) 0
--------------------------	---	-----------------------------------



Procedure NA for arrivals at AGARD on V44 eastbound.

ELEV 15	TDZE 15
---------	---------



CATEGORY	A	B	C	D
LNAV MDA	480-1	465 (500-1)	NA	
C CIRCLING	500-1 485 (500-1)	800-1 785 (800-1)	NA	

NE-3, 31 OCT 2024 to 28 NOV 2024

NE-3, 31 OCT 2024 to 28 NOV 2024