

WAAS CH 56309 W03A	APP CRS 029°	Rwy Idg TDZE 940 Apt Elev 948	5498
--	------------------------	---	-------------

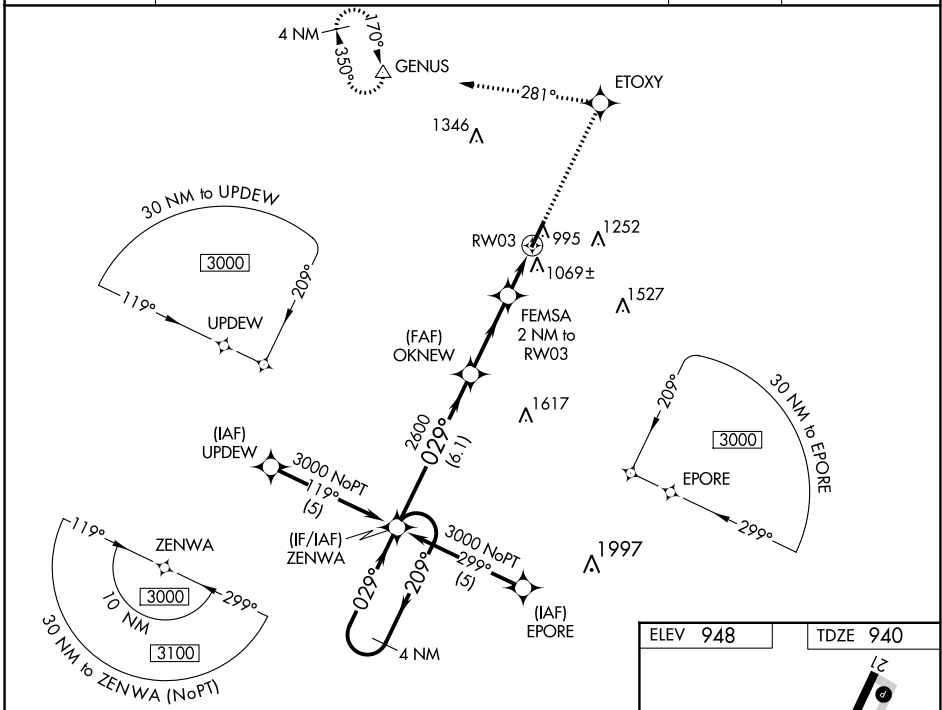
RNAV (GPS) RWY 3

GEORGETOWN-SCOTT COUNTY RGNL (27K)

NA For uncompensated Baro-VNAV systems, LNAV/VNAV NA below -16° C (4° F) or above 47° C (116° F). DME/DME RNP-0.3 NA. When local altimeter setting not received, use Lexington altimeter setting and increase LPV DA to 1178, LNAV/VNAV DA to 1413, and all MDA 40 feet; increase LPV and LNAV/VNAV visibility all Cats and LNAV Cat C and Circling Cat D visibility ¼ mile. Baro-VNAV and VDP NA when using Lexington altimeter setting.

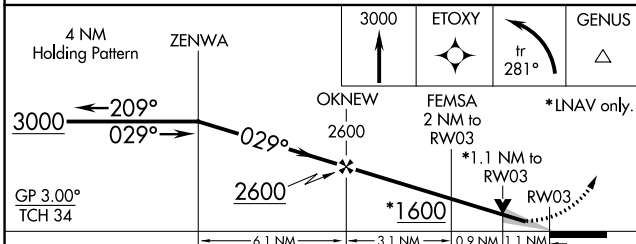
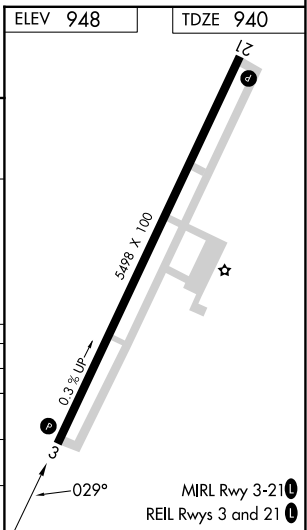
MISSED APPROACH: Climb to 3000 direct ETOXY and left turn on track 281° to GENUS and hold.

AWOS-3 119.975	LEXINGTON APP CON 120.15 259.3 (040° - 220°) 120.75 298.9 (221° - 039°)	CLNC DEL 127.425	UNICOM 123.0 (CTAF) 0
--------------------------	---	----------------------------	---------------------------------



SE-1, 31 OCT 2024 to 28 NOV 2024

SE-1, 31 OCT 2024 to 28 NOV 2024



CATEGORY	A	B	C	D
LPV DA		1140-3/4	200 (200-3/4)	
LNAV/VNAV DA		1375-1 1/2	435 (500-1 1/2)	
LNAV MDA	1320-1	380 (400-1)		1320-1 1/4 380 (400-1 1/4)
CIRCLING	1420-1	472 (500-1)	1560-1 3/4 612 (700-1 3/4)	1660-2 1/4 712 (800-2 1/4)